



N'DUVA

Multipurpose DP 1, Fi-Fi 1 platform supply vessel
for deep water operations
With methanol transport capacity
3,253 Metric ton deadweight

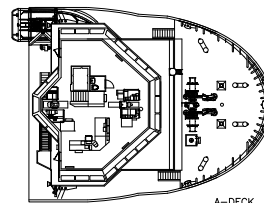


The N'DUVA is an UT 755L design, DPI, FIFI 1, platform support vessel.

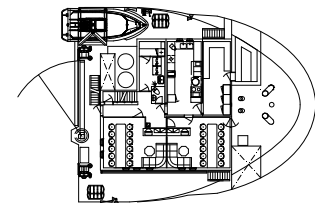
The vessel is designed for world-wide, deep water operations to fulfill the following duties:

-Transportation of liquid products, deck cargo and other equipment for drilling and production support.

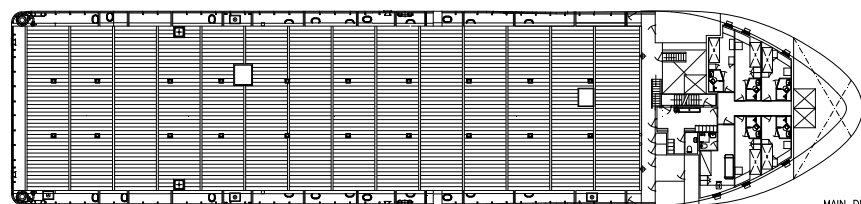
- Methanol transportation
- ROV operations.



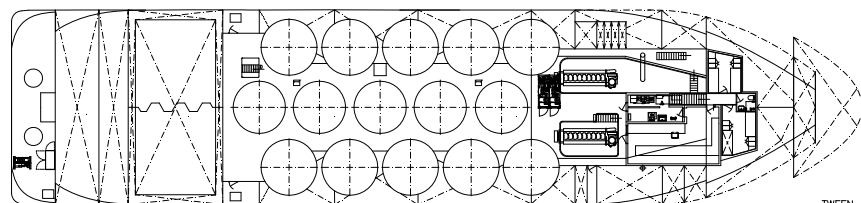
A-DECK



FORECASTLE DECK



MAIN DECK



TWEEN DECK

PLATFORM SUPPLY VESSEL

REGISTRATION

Vessel Name: **N'DUVA**

Type: **DP1 PSV, ULSTEIN Design UT 755 L.**

Year: **2002**

Owner: **SONASURF Limited**

Builder: **ØRSKOV Shipyard (Denmark).**

Class: **DET NORSKE VERITAS.**

+1A1-SF-EO-DYNPOS AUT-Fi-Fi 1-LFL.

Flag: **French**

Updated: 30-06-2009



MAIN PARTICULARS

DIMENSIONS

Length overall:	72.00 m
Breadth moulded:	16.00 m
Depth:	7.00 m
Draft:	5.90 m
Deadweight:	3,253 t
Gross tonnage:	2,161
Net tonnage:	648

CAPACITIES

Deck area:	(51.00 x 13.50 m) 688 m ²
Deck cargo:	1,663 t
Fuel oil:	1,200m ³
Drill water:	1,250 m ³
Fresh water:	790 m ³
Liquid mud:	1,000 m ³
Brine:	1,000 m ³
Base oil:	200 m ³
Dry Bulk/Cement:	318 m ³
Foam:	28 m ³
Dispersant:	14 m ³
Methanol:	200 m ³

DELIVERY RATES

Fuel oil:	200 m ³ /h at 9 bars
Drill water:	150 m ³ /h at 9 bars
Fresh water:	200 m ³ /h at 9 bars
Liquid mud:	2 x 100 m ³ /h at 18 bars
Brine:	75 m ³ /h at 18 bars
Base oil:	90 m ³ /h at 9 bars
Dry Bulk/Cement:	2 x 22.7 m ³ /min at 5.6 bars
Methanol:	2 x 75 m ³ /h at 9 bars

ACCOMMODATIONS

Accommodations for:	26 pers
Single cabins:	10
2 man cabins:	5
4 man cabins:	3
Hospital:	1
Mess / day room, laundry, provision room, stores galley.	

MACHINERY / PERFORMANCE

PROPULSION - MACHINERY

Main engines:	2 x 2730 hp
Propellers:	2 with CCP
Bow thrusters:	2 x 590 kW Tunnel
Stern thruster:	1 x 590 kW Tunnel
Rudders:	2 independent rudders with flap
Shaft generators:	2 x 1800 kVA
Auxilliary generators:	2 x 250 kW
Emergency generator:	62 kW

SPEED

Maximum speed (100%):	20 m ³ /day at 14 knots
Service speed (80%):	16 m ³ /day at 12 knots
Economic speed (50%):	9 m ³ /day at 10 knots

EQUIPMENT & ELECTRONICS

DYNAMIC POSITIONING SYSTEM

Type:	Class DP1
- Sensors and monitoring as per class I requires.	
- 1 moon-pool for later installation of a HiPaP.	
- 1 FANBEAM.	

DECK EQUIPMENT

Tuggers:	2 x 10 t
Capstans:	2 x 8 t
Deck provisions crane:	3 t at 16 m

SAFETY EQUIPMENT

Fire Fighting 1:	2 pumps 1,600 m ³ /h. 2 monitors 1,200 m ³ /h.
Life saving arrangement.	
Tank tender system: control and monitoring of valves and pumps	

ELECTRONICS

- NAVIGATION

2 radars
2 gyrocompasses
1 magnetic compass
1 digital echo-sounder
1 speed log
1 autopilot system
1 GPS & 1 DGPS.

- COMMUNICATION

1 radio system compliant with GMDSS A3.
1 Inmarsat B
1 weather fax

All particulars believed to be correct but not guaranteed