



181' BOURBON KHEPRA

DP1 Fast support and intervention vessel (FSIV)

36 passengers

390 Metric ton deck cargo

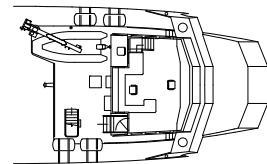


181' BOURBON KHEPRA has been designed by Sea Craft Design Inc. for fast transportation of personnel and cargo.

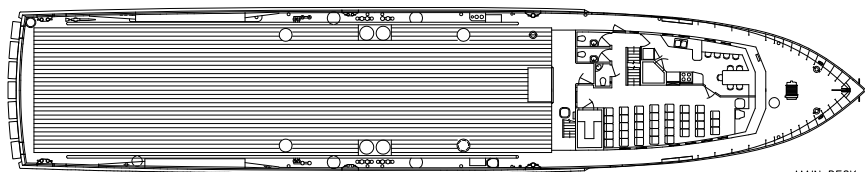
Able to carry 390 metric tons on deck at 15 knots, this vessel allows crew changes on distant deep water fields and urgent cargo shipments.

Under the main deck, the vessel is fitted with fuel, fresh water cargo capacities and four methanol tanks.

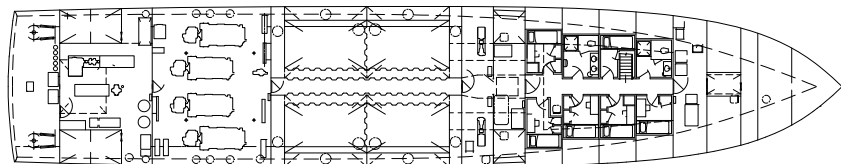
The propulsion with four propellers and a bow thruster gives her an excellent manoeuvrability. It is classed DP1.



UPPER DECK



MAIN DECK



HULL PLAN

« Photo: «BOURBON PROCYON» Sistership of «BOURBON KHEPRA».

REGISTRATION

Vessel Name: **BOURBON KHEPRA**
Type: **type "FSH" (fully shaped hull)**.
Year: **2006/2007**
Owner: **Bourbon Offshore**

Builder: **C & G Boatworks, Inc.**
Class: **ABS +A1 +AMS, DPS 1, HSC Crewboat notation, USCG Subchapter L, ABS International load line.**
Flag: **VANUATU**

FAST SUPPLY AND INTERVENTION VESSEL

Updated: 13-07-2009



TECHNICAL SPECIFICATIONS

FSIV - 181' BOURBON KHEPRA



MAIN PARTICULARS

DIMENSIONS

Length overall:.....55,15 m
 Breadth moulded:.....10,37 m
 Depth:.....4,23 m
 Draft:.....3.75 m
 Deadweight:.....580 mt
 Gross tonnage:.....< 500

CAPACITIES

Deck area:..... (34,50 x 8,60) 248 m2 @ 2,5 mt/m2
 Deck cargo:.....390 t
 Fuel oil:.....136 m3
 Liquid mud or methanol:(4 tanks).....119 m3
 Drill water:.....102 m3
 Fresh water:.....11.70 m3
 Gray water:.....3.5 m3
 Bilge:.....3.5 m3
 Sewage:.....1.60 m3
 Lub oil:.....2.10 m3

DELIVERY RATES

Fuel oil:.....60 m3/h at 6 bars
 Drill water:.....60 m3/h at 6 bars
 Liquid mud:.....100 m3/h at 6 bars
 2 independent pumping systems high mixers.
 Methanol :60 m3 at 3.8 bars
 - 1 independent methanol pumping system.
 Bulk: 1 compressor rated96 m3 at 5 bars

ACCOMMODATIONS

Accommodations for:.....10 pers
 1 man cabins:.....2
 2 man cabins:.....4
 Mess / Day rooms, Laundry, Galley, stores,
 Fully air conditioned.

 Fitted with 36 individual seats in 1 lounge.

MACHINERY / PERFORMANCE

PROPULSION - MACHINERY

Main engines:.....4 x 1,800 Bhp (total=7,200 Bhp).
 Propellers:.....4 x 54" diameter with 4 blades 56" pitch.
 Bow Retractable thruster:.....250 Bhp
 Auxiliary generators:.....2 x 160 KW
 1 fuel oil purifier.

SPEED / CONSUMPTION

Maximum speed (100%):.....18.2 m3/day 23 knots
 Full loaded speed :.....22.7 m3/day 15 knots

EQUIPMENT & ELECTRONICS

DECK EQUIPMENT

Anchor windlass: (1x195 kg anchor).....1
 Fire-fighting:
 1 monitor (270 m3/h) and 1 pump (270 m3/h).
 Roll reduction System

SAFETY EQUIPMENT

Life saving arrangement
 Stand by rescue equipment
 1 MOB boat with davit SOLAS.

DYNAMIC POSITIONING SYSTEM

Type:.....Class 1
 -Sensors and monitoring as per class 1 requirements.

ELECTRONICS

- NAVIGATION

2 radars
 1 gyrocompass
 1 magnetic compass
 1 digital echo-sounder
 1 speed log
 1 autopilot system
 1 GPS
 1 Navtex

- COMMUNICATION

1 radio system compliant with GMDSS A3
 1 SSB Duplex DSC
 2 INMARSAT (C and F55)
 2 VHF
 EPIRB

All particulars believed to be correct but not guaranteed

Bourbon Offshore - 148, rue Sainte - 13007 Marseille - France
 Internet: www.bourbon-online.com - E-mail: bourbon-offshore@bourbon-online.com