



# 155' BOURBON POLLUX

Fast support and intervention vessel (FSIV)

65 passengers

228 Metric ton deck cargo

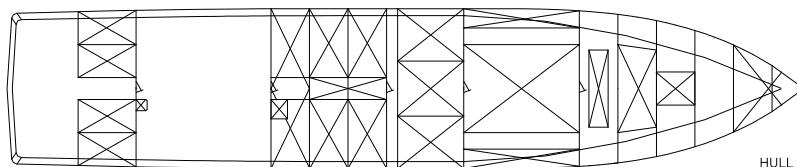
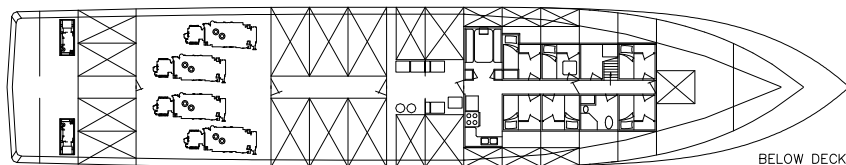


155' BOURBON POLLUX has been designed by Design Associates, Inc. for fast transportation of personnel and cargo.

Able to carry 228 metric tons on deck at 18 knots, this vessel allows crew changes on distant deep water fields and urgent cargo shipments.

Under the main deck, the vessel is fitted with fuel and fresh water cargo capacities. The propulsion with four propellers and a bow thruster gives her an excellent manoeuvrability.

The wheelhouse is partially bulletproof by means of additional steel plating.



FAST SUPPLY AND INTERVENTION VESSEL

## REGISTRATION

Vessel Name: **BOURBON POLLUX**  
Type: **type "FSH" (fully shaped hull)**.  
Year: **2005**  
Owner: **Bourbon Offshore**

Builder: **C & G Boatworks, Inc.**  
Class: **ABS HSVR classification ✦ A1 ✦ AMS, International load line.**

Flag: **VANUATU**

Updated: 24-11-2011



### MAIN PARTICULARS

#### DIMENSIONS

Length overall:	47,28 m
Breadth moulded:	8,85 m
Depth:	4,27 m
Draft:	3,27 m
Deadweight:	355 t
Gross tonnage:	320
Net tonnage:	96

#### CAPACITIES

Deck area:	(30,50 x 7,63) 232 m <sup>2</sup> @ 2,5 mt/m <sup>2</sup>
Deck cargo:	228 t
Fuel oil:	134 m <sup>3</sup>
Drill water:	189 m <sup>3</sup>
Fresh water:	5.7 m <sup>3</sup>
Gray water:	27.26 m <sup>3</sup>
Bilge:	1.51 m <sup>3</sup>
Sewage:	0.75 m <sup>3</sup>
Lub oil:	0.6 m <sup>3</sup>

#### DELIVERY RATES

Fuel oil:	59 m <sup>3</sup> /h at 4 bars
Drill water:	59 m <sup>3</sup> /h at 4 bars

#### ACCOMMODATIONS

Accommodations for:	12 pers
2 man cabins:	6
Mess / day rooms, laundry, galley, stores,	
Fully air conditioned.	

Fitted with 65 individual seats in 1 lounge

### MACHINERY / PERFORMANCE

#### PROPULSION - MACHINERY

Main engines:	4 x 1,875 Bhp.
Propellers:	4 x 54" diameter with 4 blades 54"pitch.
Bow thrusters:	125 Bhp Tunnel.
Auxiliary generators:	2 x 80 Kw
1 fuel oil purifier	

#### SPEED / CONSUMPTION

Maximum speed (100%):	15.5 m <sup>3</sup> /day 23 knots.
Cruising speed:	18 knots.
Full loaded speed :	20 m <sup>3</sup> /day 15 knots.

### EQUIPMENT & ELECTRONICS

#### DECK EQUIPMENT

Anchor windlass:	1.
Anchor:	205 kg with 330 m of cable.
Fire-fighting:	
2 monitors (113 m <sup>3</sup> /h) and 1 pump (227 m <sup>3</sup> /h).	

#### SAFETY EQUIPMENT

Life saving arrangement.
Stand by rescue equipment.
1 MOB boat with davit SOLAS.

#### ELECTRONICS

##### - NAVIGATION

2 radars
1 gyrocompass
1 magnetic compass
1 digital echo-sounder
1 speed log
1 autopilot system
1 GPS

##### - COMMUNICATION

1 radio system
compliant with GMDSS A3
1 SSB Duplex DSC
2 INMARSAT (C and F55)
C 2 VHF EPIRB

*All particulars believed to be correct but not guaranteed*