

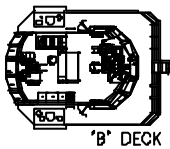


Double azimuth stern drive tug

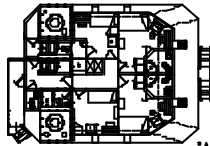
**BOURBON RHODE**

100 Metric ton bollard pull ahead

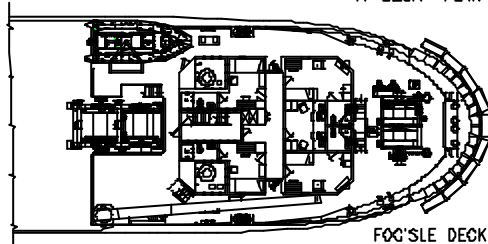
90 Metric ton bollard pull astern



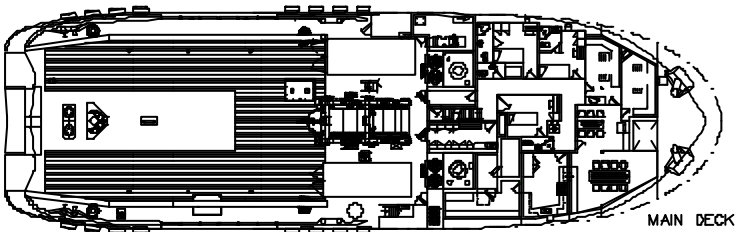
'B' DECK



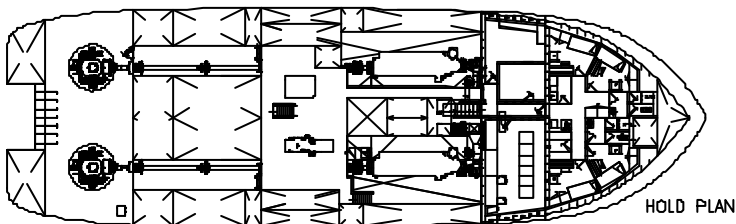
'A' DECK PLAN



FOG'SLE DECK



MAIN DECK



HOLD PLAN

BOURBON RHODE is a 100t AHT/terminal tug RAMPAGE 5000 Type.

This multi-purpose vessel is designed for terminal assistance, oil prevention and anchor handling functions.

Highly manoeuvrable, powered by two azimuth thrusters and fitted with a bow thruster together with a short hull. It is able to assist offshore oil and gas off-loading tankers either by pulling or pushing and also to assist rigs for anchor handling.

It is fitted with 2 double drum winches, one on the forecastle deck and one on the main deck. Each drum can be equipped with a tow line, offering added functionality.

In addition, it offers a 210 m<sup>2</sup> deck space for material and 20 ft containers, even refrigerated, as well as a Fire-Fighting I capability.

It also has two oil dispersant spray booms and oil recovery capacities.

06-12-2006



# Double azimuth stern drive tug

## **BOURBON RHODE**

### 100 Metric ton bollard pull ahead 90 Metric ton bollard pull astern

#### MAIN CHARACTERISTICS

Length overall: .....49.50 m.  
Beam overall (incl. rubber fender): .....15.00 m.  
Depth main deck midship?.....6.75 m.  
Draft: .....5.60 m.  
Deadweight (at 5.60 m draft):.....1,270 t.  
Bollard pull ahead: .....100 m.t.  
Bollard pull astern: .....90 m.t.  
Gross tonnage: .....1,384

#### REGISTRATION

Type: .....Double Azimuth Stern Driven Offshore Tug.  
Owner: .....Bourbon Offshore.  
Year built: .....2006.  
Builder: .....Keppel Singmarine Singapore.  
Flag: .....Saint Vincent and the Grenadines.  
Classification: .....BUREAU VERITAS 1 ✦HULL ✦MACH,  
✦AUT-UMS, TUG, UNRESTRICTED NAVIGATION  
FI-FI I, WATER SPRAYING, OIL RECOVERY.

#### PERFORMANCE

Rated speed: .....13.5 knots.

#### ACCOMMODATION

- Accommodation for 22 persons composed of:
  - 6 cabins with 1 berth.
  - 8 cabins with 2 berths.
- 1 Messroom, 2 day rooms (smoking & no smoking), sanitary spaces, stores, hospital.
- Fully air-conditioned.

#### PROPULSION - MACHINERY

- **Main diesel engines:** 2x 3,983 BHP, MAK 9M25.
- **Propellers/Rudders:** 2 Azimuth stern drive CPP in kort nozzles, Schottel SRP 3030.
- **Tunnel bow thruster:** 1x 350 kW controllable pitch propeller.
- **Auxiliary generators:** 2x 250 kW + 1x 580 kW, 440 V/60 Hz.
- **Emergency generator:** 1x 94 kW, 440 V/60 Hz each.

#### TOWING & DECK EQUIPMENT

##### **Main deck:**

- 1 Hydraulic waterfall double drums AHT winch,
  - Line pull (1 st layer): .....150 t @ 0-5 m/min.
  - Brake hold (1 st layer): .....350 t.
  - Wire capacity: 1,000 m, diam. 64 mm each drum.

##### **Forecastle deck:**

- 1 Hydraulic double drum windlass hawser winch.
  - Line pull: .....75 t.
  - Brake hold: .....250 t.
  - 1 drum sized for 350 m of 64 mm wire.
  - 1 drum sized for 250 m of 80 mm steelite rope.
- **Tugger winches:** 2x 10 tons pull.
- **Capstans:** 2x 5 tons.
- **Towing pins:** 1 pair 350 tons SWL hydraulic remote controlled.
- **Shark jaw:** 1x 350 tons SWL hydraulic remote controlled
- **Stern roller:** 1x 4.50x 2.30 m diameter, 200 tons SWL.
- **Towing hook:** 120 tons remote released.
- **Deck crane:** 1x 2 tons @ 15 m.
- **Bow fender:** Bore cylindrical 400 mm upper, W block type 400 mm thick lower.
- **FPSO hose flushing:** 2x 14" valved flange connections welded aft deck on the Fi-Fi piping.

#### FIRE-FIGHTING SYSTEM CLASS FI-FI I

- Monitors: 2x 1,200 m<sup>3</sup>/hr. each.
- Fire-fighting pumps: 2 x 1,500 m<sup>3</sup>/hr. each.
- Water/Foam throw: 75 m.
- Deluge system: self protecting water spray system.

#### STAND-BY RESCUE EQUIPMENT

- Rescue zone each side.
- 2 Scrambling nets: one on each side.
- 1 rescue craft Norsafe with davit.
- Liferafts with equipment.

#### ANTI-POLLUTION SYSTEM

- Dispersant pump: 1x 35 m<sup>3</sup>/hr with 6 % diluted dispersant.
- Dispersant booms: 2x 7 m with 5 spray nozzles.
- Dispersant tank: 1x 26 m<sup>3</sup>.
- Oil recovery capacity: 116 m<sup>3</sup>.

#### CARGO CAPACITIES, PUMPS

Free cargo deck space: .....210 m<sup>2</sup>.  
Deck cargo load: .....200 m.t.  
Cargo deck strength: .....5 t/m<sup>2</sup>.  
Fuel oil: .....(mini) 462 m<sup>3</sup>/(max) 576 m<sup>3</sup>.  
Potable water: .....128 m<sup>3</sup>.  
Ballast/drill water: .....(mini) 414 m<sup>3</sup>/(max) 528 m<sup>3</sup>.  
Lube oil: .....10 m<sup>3</sup>.  
Foam: .....23 m<sup>3</sup>.  
Dispersant: .....26 m<sup>3</sup>.  
Oil recovery: .....116 m<sup>3</sup>.

#### ELECTRONICS

- GMDSS (A3) complete.
- Sat phone iridium.
- Sat phone & data, inmarsat fleet 55.
- Local area network, 3x computers interfaced to inmarsat.

**All particulars believed to be correct but not guaranteed.**

### **Bourbon Offshore**

148, rue Sainte - 13007 Marseille - France  
Phone +33 (0)4 91 13 08 00 - Fax +33 (0)4 91 13 08 61  
[www.bourbon-online.com](http://www.bourbon-online.com) - E-mail: [bourbon-offshore@bourbon-online.com](mailto:bourbon-offshore@bourbon-online.com)