

## RELIABLE, EFFICIENT AND INNOVATIVE

A series of multipurpose supply vessels focused on providing the highest quality of service to the client

First large series of DP3 vessels dedicated to subsea operations for the oil and gas industry, the Bourbon Evolution 800 series is made for operations at depth of 2,500 and 3,000 meters (option).



### Multipurpose supply vessels for subsea operations

The series' strength relies on the integration of multiple technologies providing maximal client satisfaction: high storage capacity with a large deck space of 1,200 m<sup>2</sup> in total, redundant main systems, DP3, cabins designed by an interior designer and a dedicated client bridge.

A Bourbon Evolution 800 can operate its 2 Active Heave Compensation (AHC) cranes simultaneously: a 150 t main crane, and a 40 t auxiliary crane.

The vessel can accommodate 105 people. Equipped for fire-fighting (Fifi class 1), it can act as a standby rescue vessel.



### Main systems redundancy – Reliability

Redundancy means safe and reliable operations. As such, each Bourbon Evolution 800 is designed with 3 stern thrusters, 3 bow thrusters, 1 main dual redundant DP control position (with an additional, simplex, control station located separately), 2 engine rooms, 7 main generators, 2 man-riding AHC cranes and 2 Vsat antennas.

### Dynamic Positioning class III – Maneuverability

Each vessel of the Bourbon Evolution 800 series is classified DP3 which allows the vessel to maintain her position and therefore to be highly maneuverable. It is the highest category of DP system configuration, in which system availability is maximized and where the consequences of failures are minimized.



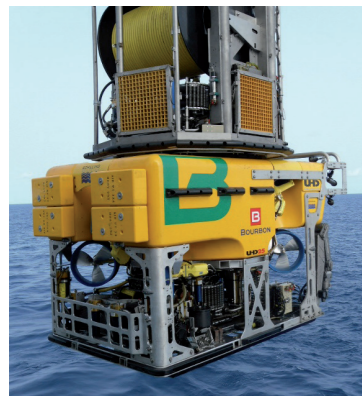
### Fuel savings – Cost optimization for the client

The Bourbon Evolution 800 series is designed with diesel-electric propulsion, a very cost-effective solution for offshore operations. This concept provides highly competitive low-fuel management, allowing, depending on the type of operation, to reduce fuel consumption by up to 30% comparing to traditional vessels.

### Multiple configurations

A Bourbon Evolution 800 can be configured:

- As a Subsea Multi-Purpose Supply Vessel with 1 or 2 ROVs, a large deck space of 1,200 m<sup>2</sup>, 2 high capacity cranes
- In a well-testing/FPSO mode, able to store up to 24,000 barrels of crude oil
- In a wireline/well-intervention mode, for wireline & coil tubing with a 150 t derrick capacities.



### BOURBON ROVs

BOURBON operates its own fleet of Remotely Operated Vehicles (ROVs). This fleet is made of Observation and Survey ROVs, as well as Work ROVs. Capable of handling loads from a few kg up to 3.5 t, they are fitted with state-of-the-art equipment including deep positioning to ensure precision and stability, the latest-generation multiplex system to transmit a high quality signal, high-definition cameras, a sophisticated control system, etc.



# Designed for operational excellence

148, rue Sainte  
13007 Marseille  
France  
T : +33 (0)4 91 13 08 00  
F : +33 (0)4 91 13 07 90

Contact:  
marketing@bourbon-subsea-services.com

EVAISON COMMUNICATION - Photos: BOURBON - Triptyque - Bourbon Evolution 800 - evi05 - 0023

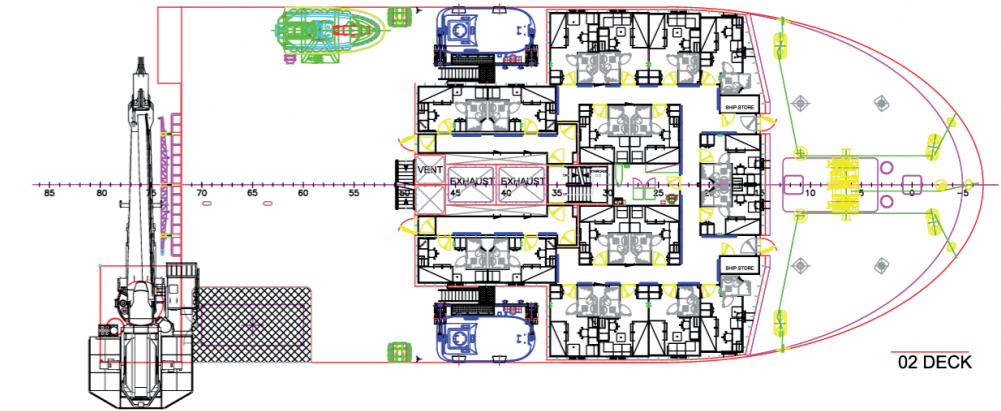
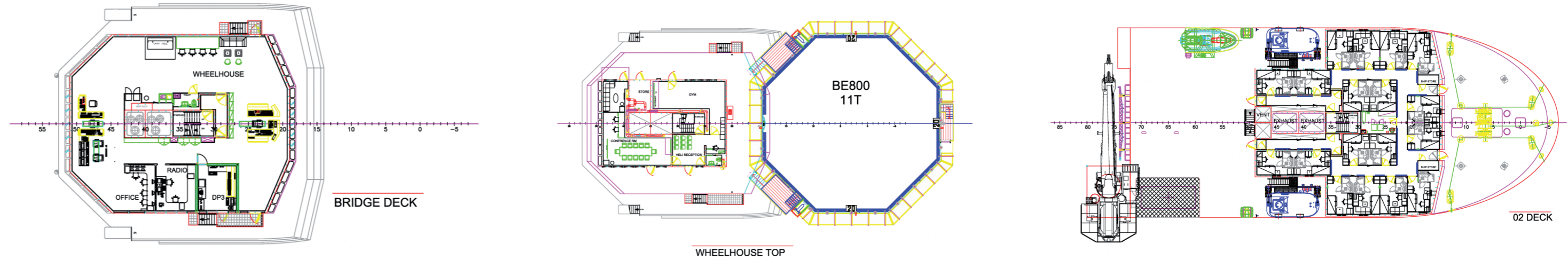


## Bourbon Evolution 800

Multi-Purpose Supply Vessels

# Bourbon Evolution 800

Designed for operational excellence



## MACHINERY / PERFORMANCE

### PROPULSION - MACHINERY

6 engines in 2 separate engine rooms & 1 additional  
 Total: 7 x 1,235 kW  
 Variable speed Stern azimuth: 3 x 1,686 kW  
 Variable speed Bow tunnels: 2 x 843 kW  
 Azimuth thruster forward retractable: 1 x 843 kW  
 Deck service air compressor: 1,200m³/h at 6,3 bars  
 Emergency generator: 450 kW  
 Deck ROV power supply: 2 x 500 kW - 480 V  
 Nitrogen plant, Incinerator

### SPEED

8.5 - 10 knots

## EQUIPMENT & ELECTRONICS

### ELECTRONICS

Class III DP system (DYNPOS etc.) - GE  
 2 - DGPS Aquarius Thales type 1 & 2  
 Laser (cyscan)  
 MRU type DMS05 & RP25, 2 wind sensors, 3 Meridian TSS gyro

### NAVIGATION

1 radar S-band - 1 radar X-band - 1 radar slave

### COMMUNICATION

UHF, VHF, V-Sat C, Fleet 77  
 KU band  
 Cat 5 network, video network, telephone/video in all cabins

### SAFETY EQUIPMENT

FIFI Class I 2 pumps x 2,400 m³/h - 2 monitors x 1,200m³/h  
 Fast rescue craft  
 150 persons rescue equipment as per SOLAS/BV

### DECK EQUIPMENT

Main deepwater crane AHC knuckle boom hydramarine  
 Main winch, crane capacity:  
 - Harbour capacity: DAF 1.2 - 150 t at 10 m - 35 t at 35 m  
 - Offshore capacity: DAF 1.4 - 150 t at 10 m - 25 t at 35 m  
 - 2nd winch: AHC - 20 t at 36 m - man riding  
 - 2nd deck deepwater AHC offshore crane SMST:  
 - 40 t at 9 m - 20 t at 21 m (harbour)  
 - 40 t at 9 m - 12 t 21 m (offshore)  
 Man riding  
 Capstans: 2 x 10 t  
 Tugger Winch: 1 x 15 t  
 Option: 8 points mooring system

## MAIN PARTICULARS

Design: Guido Perla & Associates  
 Builder: Sinopacific  
 Length overall: 100.20 m  
 Breadth moulded: 21.00 m  
 Depth: 8.00 m  
 Draft: 6.00 m  
 Deadweight at max. draft: 4,650 t  
 Max displacement: 9,450 t  
 Helideck: S61/Super Puma  
 Bollard pull (for info): 70 t  
 Class: 1 ✕ HULL ✕ MACH, Offshore Supply Vessel, Oil Recovery Ship,  
 Chemicals products, Oil products, Special service/Stand by rescue vessel  
 (150 survivors in tropical area), Fire Fighting Ship 1, Water Spraying,  
 Unrestricted navigation, ✕ AUT-UMS, ✕ ALM, ✕ DYNAPOS-AM/AT-RS,  
 + SDS, COMF-NOISE 3, COMF-VIB3, CLEANSHIP SUPER

### CAPACITIES

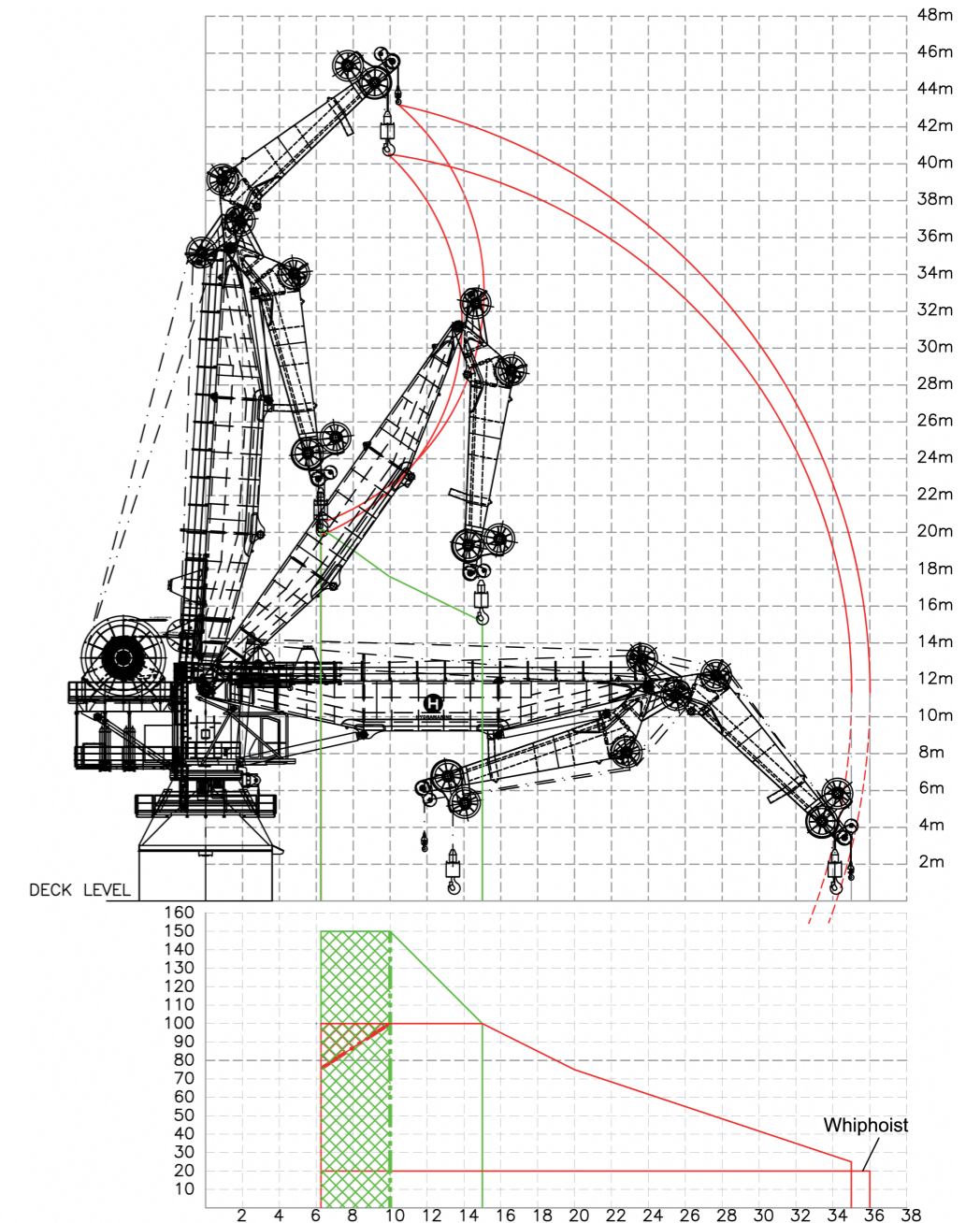
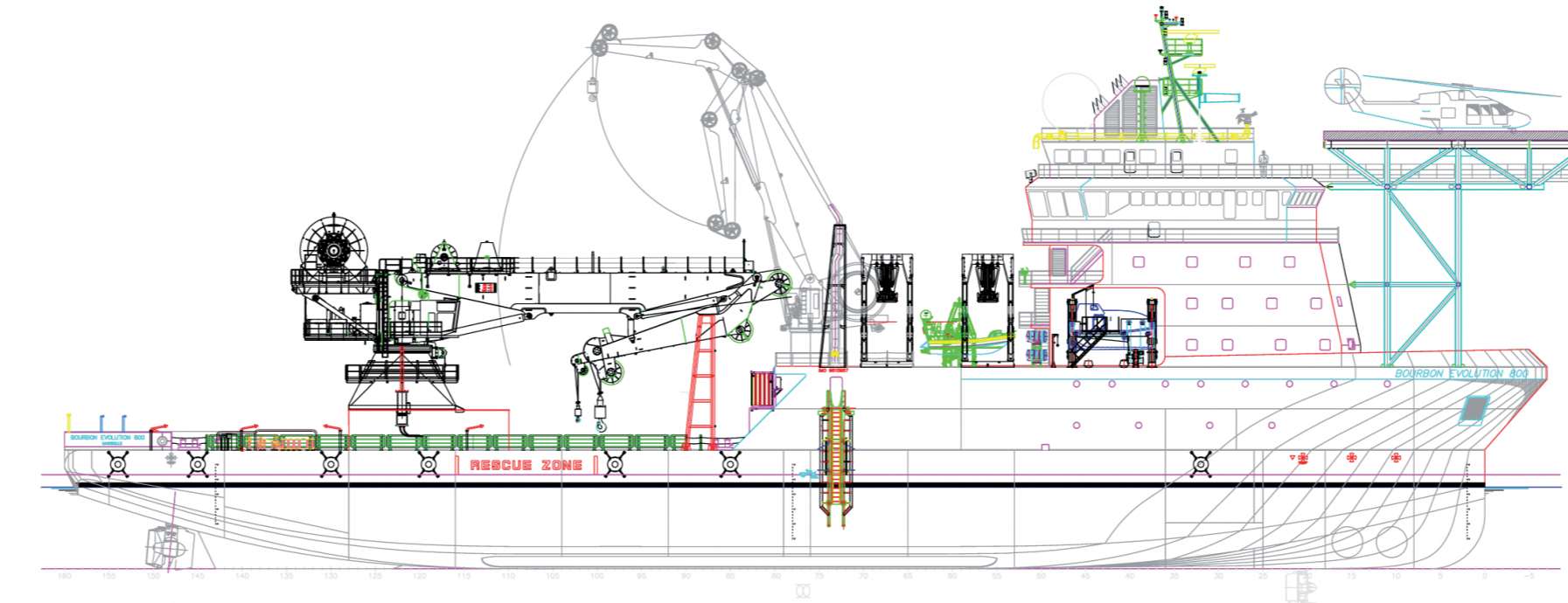
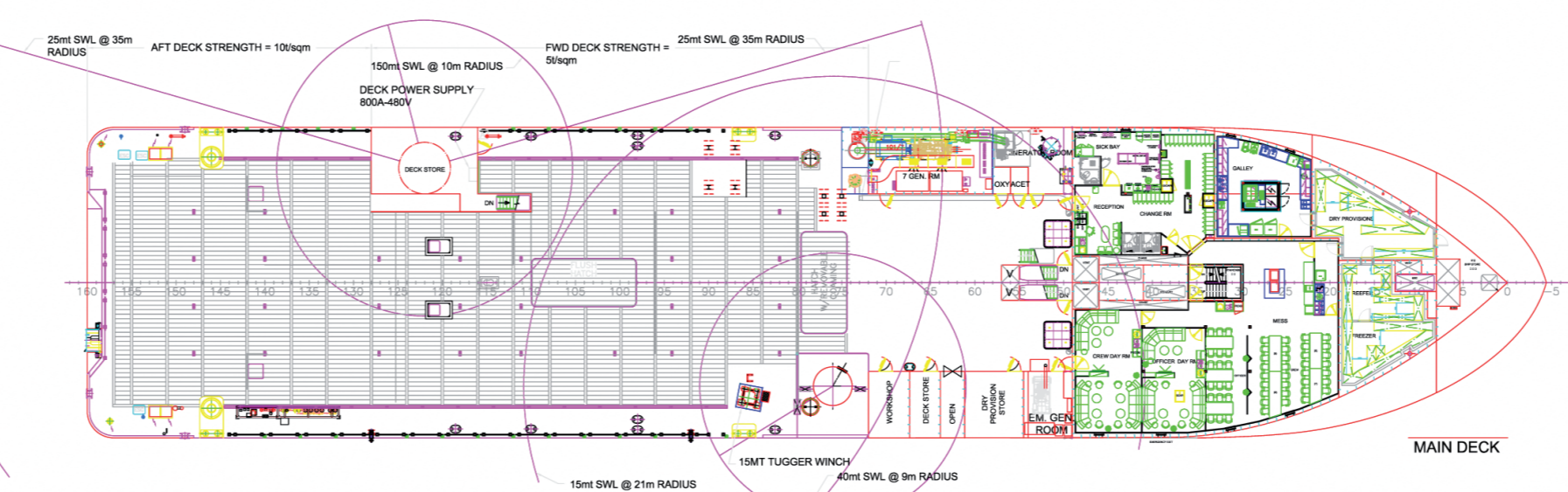
Clear deck area (5t/m², 10t/m² aft): 940 m²  
 Sheltered deck area (5t/m²): 130 m²  
 Mezzanine deck area: 230 m²  
 Deck cargo: 2000 t / 1600 t  
 Fuel oil: 1096 m³  
 Oil recovery: 300 m³  
 Fresh water: 946 m³  
 Ballast water: 2508 m³  
 Special products / Methanol: 374 m³

### TRANSFER

Fuel: 150 m³/h at 7 bars  
 Fresh water: 150 m³/h at 7 bars  
 Active anti heeling ballast: 2 x 1,500 m³/h  
 Special products / Methanol: 2 x 100 m³/h at 9 bars

### ACCOMODATIONS

Accommodations for: 105 pers  
 Single cabins: 33  
 2 men cabins: 36  
 Offices: 4  
 Conference room (10 pers): 1  
 Hospital: 1  
 Mess / Day rooms: 2  
 Workshops: 2  
 Moonpool (not open-option): 8 m x 8 m



All particulars believed to be correct but not guaranteed