



# BOURBON HIMALYA

DP 2 diesel electric platform support vessel  
for deep water operations  
with methanol transport capacity  
3,340 t deadweight



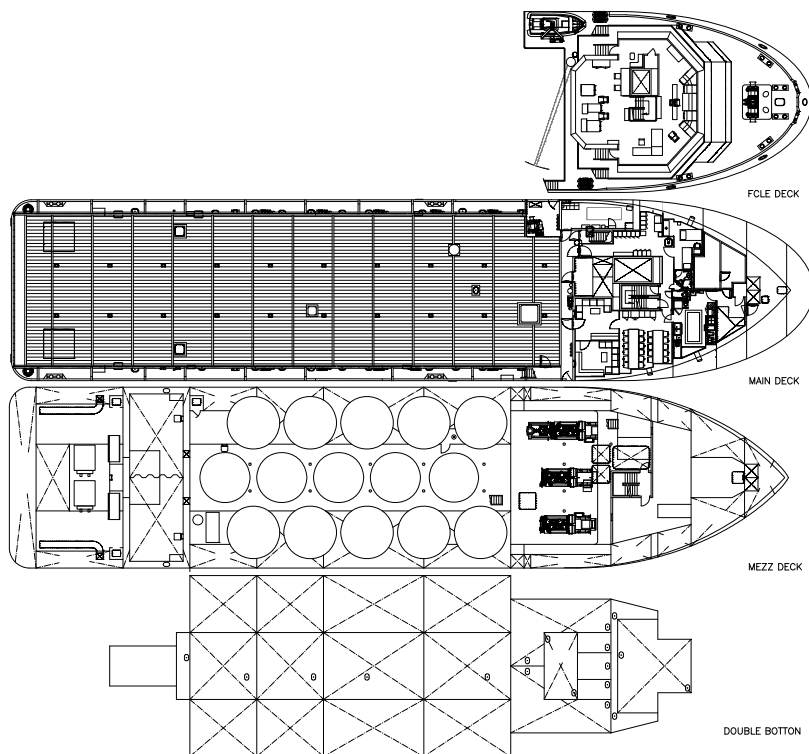
The BOURBON HIMALYA, is a GPA 670 PSV designed in conjunction with Guido Perla & Associates of Seattle, Washington. This environmentally friendly diesel electric vessel uses less fuel than conventional direct-drive propulsion vessels and produces far less pollution. The vessel is also classed DP11.

The GPA 670 design allows for greater tank and delivery capacity to compete with vessel larger than it.

The vessel is designed for world-wide, deep water and shallow water operations to fulfill the following duties:

- Transportation of liquid products, deck cargo and other equipment for drilling and production support.

« Photo: «BOURBON HERMES» Sistership of «BOURBON HIMALYA».



PLATFORM SUPPLY VESSEL

## REGISTRATION

Vessel Name: **BOURBON HIMALYA**  
 Type: **DP2 PSV, GPA 670 MkII methanol**  
 Year: **2008**  
 Flag: **FRENCH** / Owner: **Bourbon Offshore**

Builder: **Zhejiang (China)**  
 Class: **BV 1 + HULL, + MACH, Unrestricted Navigation,**  
**Supply Vessel-Oil product, Fire-fighting ship 1, Water spray,**  
**+AUT-UMS, +DYNAPOS AM-AT-R (class 2).**

Updated: 30-06-2009



### MAIN PARTICULARS

#### DIMENSIONS

Length overall:	73.20m
Breadth moulded:	16.50m
Depth:	6.80m
Draft:	5.50 m
Deadweight:	3,340t
Gross tonnage:	2,321
Net tonnage:	696

#### CAPACITIES

Deck area:	(50,30 x 13,70) 689 m2 with 5 t/m2
Deck cargo:	1,600 t
Fuel oil:	2,096 m3
Drill water:	405m3
Ship service ballast:	405m3
Fresh water:	577 m3
Liquid Products:	1,488 m3
Base oil:	198 m3
Mud:	255 m3
Methanol:	177 m3

#### DELIVERY RATES

Fuel oil:	150 m3/h at 9 bars
Drill water:	150 m3/h at 9 bars
Fresh water:	150 m3/h at 9 bars
Liquid Products:	2 x 75 m3/h at 15 bars
Base oil:	150 m3/h at 9 bars
Bulk material:	2 x 50 t/h at 6 bars

#### ACCOMMODATIONS

Accommodations for:	24 pers
Single cabins:	6
2 man cabins:	5
4 man cabins:	2
Hospital:	1
Mess / Day rooms, Laundry, Galley, stores	
Fully air conditioned	

### MACHINERY / PERFORMANCE

#### PROPULSION - MACHINERY

Main engines:	3 x 1,825 kW
Propellers:	Z drive, fixed pitch, 360 degrees
Bow thrusters:	2 x 746 kW Tunnel
Auxilliary generators:	2 x 1,920 kW
Emergency generator:	250 kW

#### SPEED / CONSUMPTION

Maximum speed (100%):	13 knots
-----------------------	----------

### EQUIPMENT & ELECTRONICS

#### DYNAMIC POSITIONING SYSTEM

Type:	Class 2
-Sensors and monitoring as per class 2 requirements	
-1 vertical reference unit.	

#### DECK EQUIPMENT

Tugger:	1 x 10 t
Capstans:	2 x 8 t
Deck provisions crane:	2 t at 16 m
Roll reduction System	

#### SAFETY EQUIPMENT

Fire Fighting (Fifi 1) ( 2 pumps of 1,500 m3/h and 2 monitors)	
Life saving arrangement	
Stand by rescue equipment	
Remote control and monitoring of main cargo systems.	

#### ELECTRONICS

##### - NAVIGATION

2 radars
2 gyrocompasses
1 magnetic compass
1 digital echo-sounder
1 speed log
1 autopilot system
1 GPS ( and 2 DGPS )

##### - COMMUNICATION

1 radio system compliant with GMDSS A3
1 Inmarsat F 77
1 iridium
V-Sat

*All particulars believed to be correct but not guaranteed*