



# BOURBON HERA

DP 2 diesel electric platform support vessels  
for deep water operations  
3,230 t deadweight



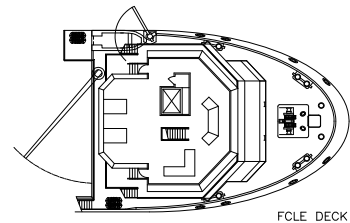
The BOURBON HERA, is a GPA 670 PSV designed in conjunction with Guido Perla & Associates of Seattle, Washington. This environmentally friendly diesel electric vessel uses less fuel than conventional direct-drive propulsion vessels and produces far less pollution. The vessel is also classed DP 2.

The GPA 670 design allows for greater tank and delivery capacity to compete with vessel larger than it.

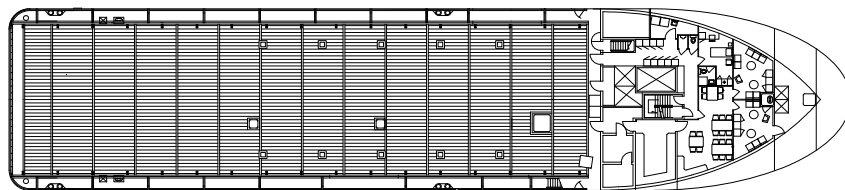
The vessel is designed for world-wide, deep water and shallow water operations to fulfill the following duties:

- Transportation of liquid products, deck cargo and other equipment for drilling and production support.

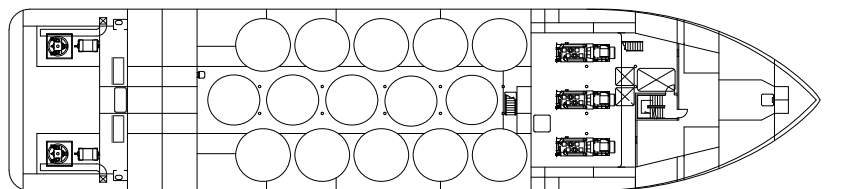
« Photo: «BOURBON HERMES» Sistership of «BOURBON HERA».



FCLE DECK



MAIN DECK



MEZZANINE DECK

PLATFORM SUPPLY VESSEL

## REGISTRATION

Vessel Name: **BOURBON HERA**

Type: **DP2 PSV, GPA 670**

Year: **2006**

Flag: **French** / Owner: **Bourbon Offshore**

Builder: **Zhejiang (China)**

Class: **BV1+ Hull + MACH Unrestricted Navigation,**

**Supply Vessel oil product, Fire fighting ship 1, Water spray,**

**+ AUT-UMS + DYNPOS AM-AT-R (class 2).**

Updated: 30-06-2009



### MAIN PARTICULARS

#### DIMENSIONS

Length overall:	73.20m
Breadth moulded:	16.50m
Depth:	6.80m
Draft:	5.63 m
Deadweight:	3,230t
Gross tonnage:	2,321
Net tonnage:	696

#### CAPACITIES

Deck area:	(50,30 x 13,70) 675 m2 with 5 t/m2
Deck cargo:	1,600 t
Fuel oil:	1,117 m3
Drill water:	759 m3
Fresh water:	579 m3
Liquid mud, Brine:	1,092 m3
Base oil:	188 m3
Dry Bulk/Cement:	255 m3

#### DELIVERY RATES

Fuel oil:	150 m3/h at 9 bars
Drill water:	150 m3/h at 9 bars
Fresh water:	150 m3/h at 9 bars
Liquid mud, Brine:	2 x 75 m3/h at 15 bars
Base oil:	150 m3/h at 9 bars
Dry Bulk/Cement:	50 t/h at 6 bars

#### ACCOMMODATIONS

Accommodations for:	23 pers
Single cabins:	5
2 man cabins:	5
4 man cabins:	2
Hospital:	1
Mess / day rooms, laundry, galley, stores	
Fully air conditioned.	

### MACHINERY / PERFORMANCE

#### PROPULSION - MACHINERY

Main engines:	3 x 1,825 kW
Propellers:	Z drive, fixed pitch, 360 degrees
Bow thrusters:	2 x 746 kW Tunnel
Auxilliary generators:	2 x 1,920 kW
Emergency generator:	170 kW

#### SPEED / CONSUMPTION

Maximum speed (100%):	13 knots
-----------------------	----------

### EQUIPMENT & ELECTRONICS

#### DYNAMIC POSITIONING SYSTEM

Type:	Class 2
-Sensors and monitoring as per class 2 requirements	
-1 vertical reference unit.	

#### DECK EQUIPMENT

Tugger:	1 x 10 t
Capstans:	2 x 8 t
Deck provisions crane:	2 t at 10 m
Roll reduction System.	

#### SAFETY EQUIPMENT

Fire Fighting (Fifi 1) ( 2 pumps of 1,500 m3/h and 2 monitors)	
Life saving arrangement.	
Stand by rescue equipment.	
Remote control and monitoring of main cargo systems.	

#### ELECTRONICS

##### - NAVIGATION

2 radars
2 gyrocompasses
1 magnetic compass
1 digital echo-sounder
1 speed log
1 autopilot system
1 GPS ( and 2 DGPS )

##### - COMMUNICATION

1 radio system compliant with GMDSS A3
1 Inmarsat F 77
1 iridium

*All particulars believed to be correct but not guaranteed*