



BOURBON DIAMOND

DP2 Large Platform Supply Vessel
for deep water operations
4,850 t deadweight
9,790 bhp

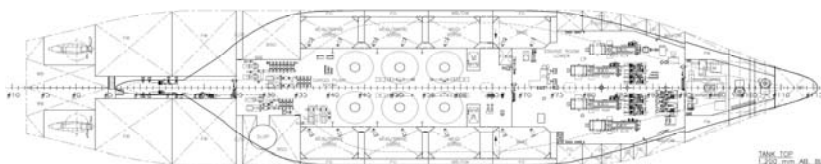
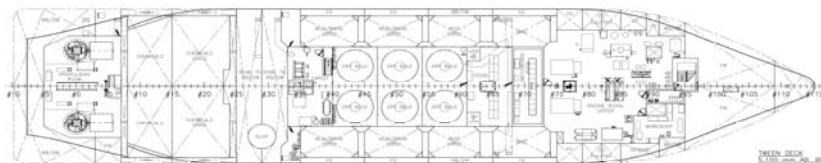
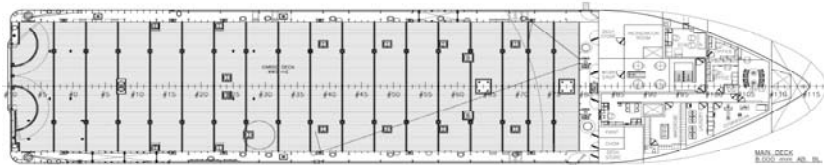
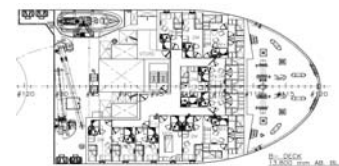


BOURBON DIAMOND is an Ulstein Design P105 Diesel electric large platform supply vessel.

It is designed for World Wide service, for the purpose of performing and fulfilling the following duties:

- Subsea Intervention services, ROV operations,
- Transportation of pipes, cement, equipment and liquid cargo to and from pipelay vessels, drilling platforms and ships.
- Arranged for oil recovery operations, Fi-Fi I class.

« Photo: «BOURBON RUBY» Sistership of «BOURBON DIAMOND».



PLATFORM SUPPLY VESSEL

REGISTRATION

Vessel Name: **BOURBON DIAMOND**

Type: **DP2 PSV, ULSTEINVERFT Design P105**

Year: **2008**

Owner: **Bourbon Offshore**

Builder: **Zhejiang Shipyard**

Class: **DNV+1A1, SF, Supply Vessel, EO, DK (+) NAUT OSV, HL (+), DYNPOS AUTR, LFL*, Oil Rec, Fi-Fi I, Clean Comf. V(3).**

Flag: **Norwegian**

Updated: 16-07-2009



TECHNICAL SPECIFICATIONS

PSV - BOURBON DIAMOND



MAIN PARTICULARS

DIMENSIONS

Length overall:	91.10 m
Breadth moulded:	19.00 m
Depth:	8.00 m
Draft:	6.50 m
Deadweight:	4,850 t
Gross tonnage:	4,200
Net tonnage:	1,423

CAPACITIES

Free cargo deck area: (61 x 16.20 m).....	990 m ²
Deck cargo: (10 t/m ² and 23 t/m ² axle load)	2,850 t
Fuel oil:	1,170 m ³
Base oil :	250 m ³
Ballast water :	1,360 m ³
Drill water:	950 m ³
Fresh water:	980 m ³
Brine: (comb. with mud).....	600 m ³
Dry Bulk/Cement:	(6 x 50m ³) 300 m ³
Methanol/Chemical*:	380 m ³
Oil recovery:	1,080 m ³

*Offloading capacity restriction with cargo rail removed.

DELIVERY RATES

Fuel oil:	250 m ³ /h at 9 bars
Base oil:	150 m ³ /h at 9 bars
Ballast/Drill water:	250 m ³ /h at 9 bars
Fresh water:	250 m ³ /h at 9 bars
Liquid mud/Brine:	100 m ³ /h at 24 bars
Chemical:	100 m ³ /min at 6 bars

ACCOMMODATIONS

Accommodations:	50 pers.
Single cabins:	12
2 man cabins:	7
2+2 man cabins:	3
2+2+2 man cabins:	2
Hospital:	1
Mess / day rooms:	1 mess / 2 day rooms
Laundry:	1
Galley:	1
Offices, cool store/freezer.	

MACHINERY / PERFORMANCE

PROPULSION - MACHINERY

Main engines:	4 x 1,825 kW
Propellers:	Controllable pitch, 2 x Azipull Thruster, 2,500 kW
Tunnel bow thrusters:	2 x 880 kW
Swing-up compass thruster in nozzle:	1x 880 kW
Main generators:	4 x 2,028 kVA
Emergency generator:	250 kW
Harbour generator:	315 kW

SPEED / CONSUMPTION

Maximum speed (100%) @ 5 m draft:	15 knots
Service speed (80%):	13 knots
Economic speed (50%):	12 knots
Stand by at port:	1 m ³ /h

EQUIPMENT & ELECTRONICS

DECK EQUIPMENT

Cargo deck cranes: knuckel boom 1x 3 t @ 10 m, 1x 10 t @ 10 m.	
Capstan:	2 x 10 t.
Deck tugger:	1 x 15. t.
Tuggers winch:	1 hydrakraft 15t pull & 1 hydrakraft 20t pull
Capstans:	2 hydrakraft 200252, capacity 10t pull each

Structure Prepared for helideck and offshore crane.

SAFETY EQUIPMENT

Fire Fighting (Fifi 1).	
- Pumps :	2 pumps 1,600 m ³ /h each.
- Monitors :	2 monitors 1,200 m ³ /h each.
Life saving arrangement /stand-by rescue equipment, according to SOLAS regulation.	
6 x Life rafts, (25 pers each). Life jackets for 50 pers, 8 life buoys.	
1 x MOB boat (Mare Safety GRP700 with davit).	

ELECTRONICS

DYNAMIC POSITIONING (DNV class DYNPOS AUTR-DP2).

Kongsberg
ERN 99/98/97.5
2-DGPS Kongsberg DPS700-DPS102
HIPAP 450
Fan beam
MRU 5 & MRU 2 Kongsberg, 2 wind sensors, 3 Anchutz gyro standard 22

NAVIGATION

1 radar S-band & 1 radar X-band ARPA -1 radar slave
3 gyrocompass (Anchutz standard 22)
ECDIS, AIS, VDR.

COMMUNICATION

1 radio system compliant with GMDSS A3 rules,
UHF, VHF Sat C, Fleet 77
KU band 128 kbit

All particulars believed to be correct but not guaranteed

Bourbon Offshore - 148, rue Sainte - 13007 Marseille - France
 Internet: www.bourbon-online.com - E-mail: bourbon-offshore@bourbon-online.com