

Designed for customers'
operational excellence



Bourbon Evolution 800

Multi-Purpose Supply Vessels

RELIABLE, EFFICIENT AND INNOVATIVE

A series of 10 multipurpose supply vessels focused on providing the highest quality of service to the client

First large series of DP3 vessels dedicated to subsea operations for the oil and gas industry, the Bourbon Evolution 800 series is made for operations at depth of 2,500 and 3,000 meters.



Multipurpose supply vessels for subsea operations

The series' strength relies on the integration of multiple technologies providing maximal client satisfaction: high storage capacity with a large deck space of 1,200 m², redundant main systems, DP3, cabins designed by an interior designer and a dedicated client bridge.

A Bourbon Evolution 800 can operate its 2 Active Heave Compensation (AHC) cranes simultaneously: a 150 t main crane, and a 40 t auxiliary crane.

The vessel can accommodate 105 people (even more in floatel mode). Equipped for fire-fighting (FiFi class 1), it can act as a standby rescue vessel.



Main systems redundancy – Reliability

Redundancy means safe and reliable operations. As such, each Bourbon Evolution 800 is designed with 3 stern thrusters, 3 bow thrusters, 1 main dual redundant DP control position (with an additional, simplex, control station located separately), 2 engine rooms with 7 main generators, 2 AHC cranes and 2 VSAT connections.

Dynamic Positioning class III – Maneuverability

Each vessel of the Bourbon Evolution 800 series is classified DP3 which allows the vessel to maintain her position and therefore to be highly maneuverable. It is the highest category of DP system configuration, in which system availability is maximized and where the consequences of failures are minimized.



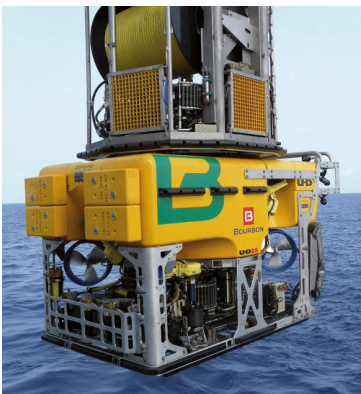
Fuel savings – Cost optimization for the client

The Bourbon Evolution 800 series is designed with diesel-electric propulsion, a very cost-effective solution for offshore operations. This concept provides highly competitive low-fuel management, allowing, depending on the type of operation, to reduce fuel consumption by up to 30% comparing to traditional vessels.

Multiple configurations

A Bourbon Evolution 800 can be configured:

- ☐ As a **Subsea Multi-Purpose Supply Vessel** with 1 or 2 ROVs, a large deck space of 1,200 m², 2 high capacity cranes
- ☐ In a **floatel mode**, able to accommodate a total capacity of 240 persons
- ☐ In a **well-testing/FPSO mode**, able to store up to 24,000 barrels of crude oil
- ☐ In a **wireline/well-intervention mode**, for wireline & coil tubing with a 150 t derrick capacities.



BOURBON ROVs

BOURBON owns its own fleet of Remotely Operated Vehicles (ROVs). This fleet is made of Observation and Survey ROVs, as well as Work ROVs. Capable of handling loads from a few kg up to 3.5 t, they are fitted with state-of-the-art equipment including deep positioning to ensure precision and stability, the latest-generation multiplex system to transmit a high quality signal, high-definition cameras, a sophisticated control system, etc.

Bourbon Evolution 800

Designed
for customers'
operational
excellence



MACHINERY / PERFORMANCE

PROPULSION - MACHINERY

2 separate engine rooms - Main generators:	7 x 1,235 kW - 600 V
Stern azimuthing propellers FP:	3 x 1,686 kW
Bow thrusters FP:	2 x 843 kW tunnel
Azimuth thruster forward retractable:	1 x 843 kW
Deck service air compressor:	1,200m³/h at 6,3 bars
Emergency generator:	450 kW
Deck ROV power supply:	2 x 500 kW - 480 V
Nitrogen plant, Incinerator	

SPEED

Maximum speed (100%):	12 knots
Economic speed:	10 knots

EQUIPMENT & ELECTRONICS

ELECTRONICS

Dynamic positioning (BV class DYNPOS AT RS-DP3)
Converteam
2 - DGPS Aquarius Thales type 1 & 2
Laser (cyscan)
MRU type DMS05 & RP25, 2 wind sensors, 3 Meridian TSS gyro

NAVIGATION

1 radar S-band - 1 radar X-band - 1 radar slave

COMMUNICATION

UHF, VHF, V-Sat C, Fleet 77
KU band 128 bit
Cat 5 network, video network, telephone/video in all cabins

SAFETY EQUIPMENT

FIFI Class I 2 pumps x 2,400 m³/h - 2 monitors x 1,200m³/h
Fast rescue craft
150 persons rescue equipment as per SOLAS/BV

DECK EQUIPMENT

Main deepwater crane AHC knuckle boom hydramarine
Main winch, crane capacity:
- Harbour capacity : DAF 1.2 - 150 t at 10 m - 35 t at 35 m
- Offshore capacity : DAF 1.4 - 150 t at 10 m - 25 t at 35 m
- 2nd winch: AHC - 20 t at 36 m - man riding
- 2nd deck deepwater AHC offshore crane SMST:
- 40 t at 9 m - 20 t at 21 m (harbour)
- 40 t at 9 m - 12 t 21 m (offshore)
Man riding
Capstans: 2 x 10 t
Tugger Winch : 1 x 15 t
Option: 8 points mooring system

MAIN PARTICULARS

Design:	Guido Perla & Associates
Builder:	Sinopacific
Length overall:	100.20 m
Breadth moulded:	21.00 m
Depth:	8.00 m
Draft:	6.00 m
Deadweight at max. draft:	4,650 t
Max displacement:	9,450 t
Helideck:	S61/Super Puma
Bollard pull (for info):	70 t
Class: 1 ✕ HULL ✕ MACH, Offshore Supply Vessel, Oil Recovery Ship, Chemicals products, Oil products, Special service/Stand by rescue vessel (150 survivors in tropical area), Fire Fighting Ship 1, Water Spraying, Unrestricted navigation, ✕ AUT-UMS, ✕ ALM, ✕ DYNAPOS-AM/AT-RS, + SDS, COMF-NOISE 3, COMF-VIB3, CLEANSHIP SUPER	

CAPACITIES

Clear deck area (5t/m², 10t/m² aft):	940 m²
Scheltered deck area (5t/m²):	130 m²
Mezzanine deck area:	230 m²
Deck cargo:	2000 t / 1600 t
Fuel oil:	1096 m³
Oil recovery:	300 m³
Fresh water:	946 m³
Ballast water:	2508 m³
Special products / Methanol:	374 m³

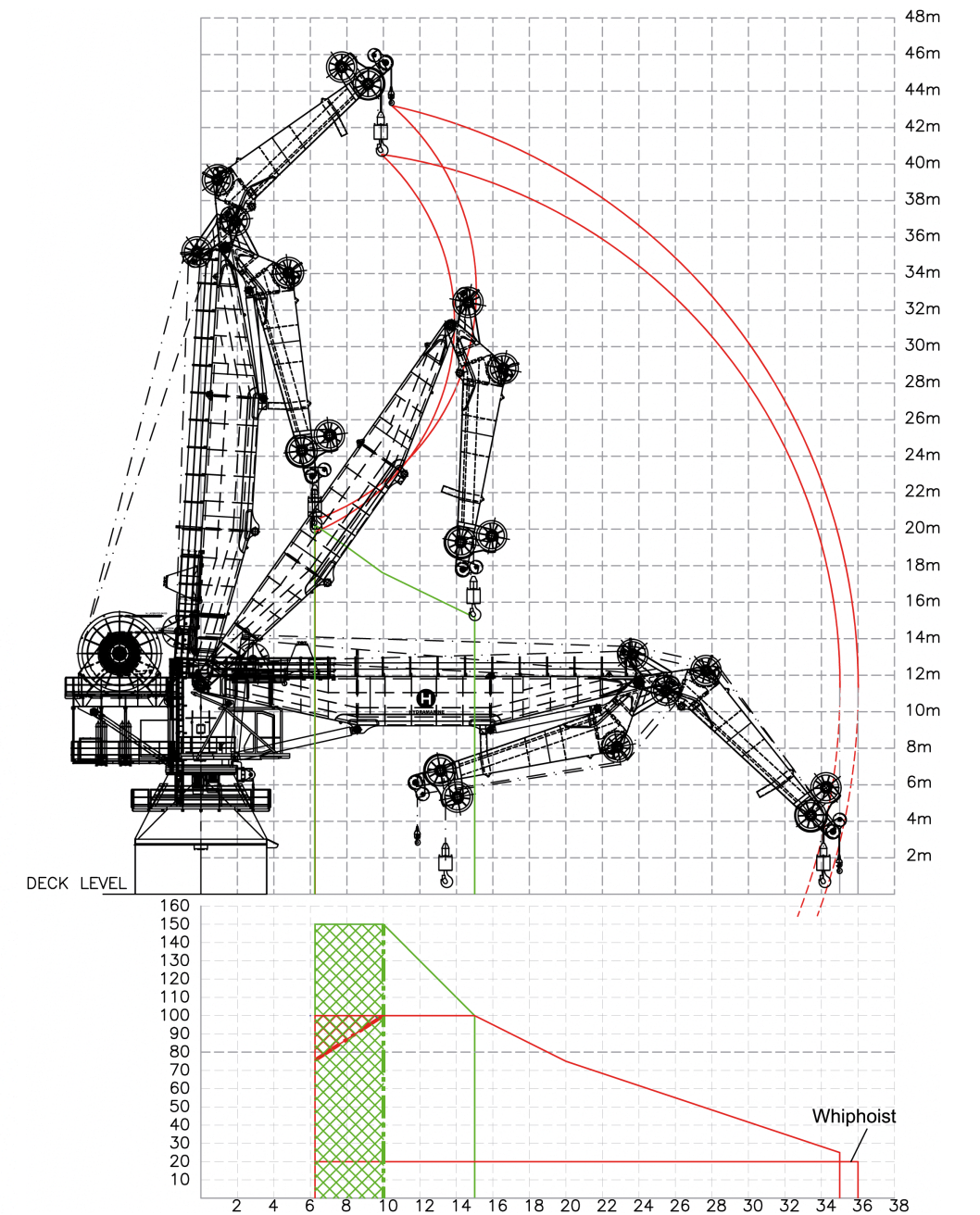
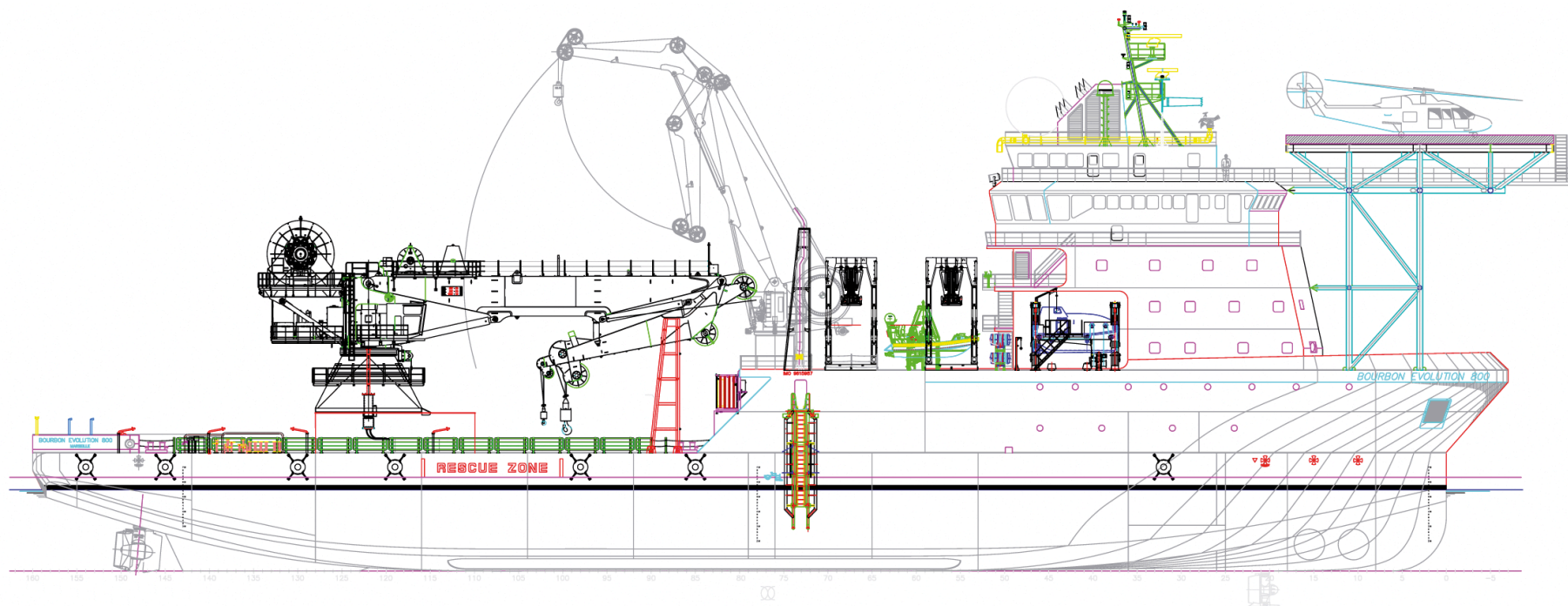
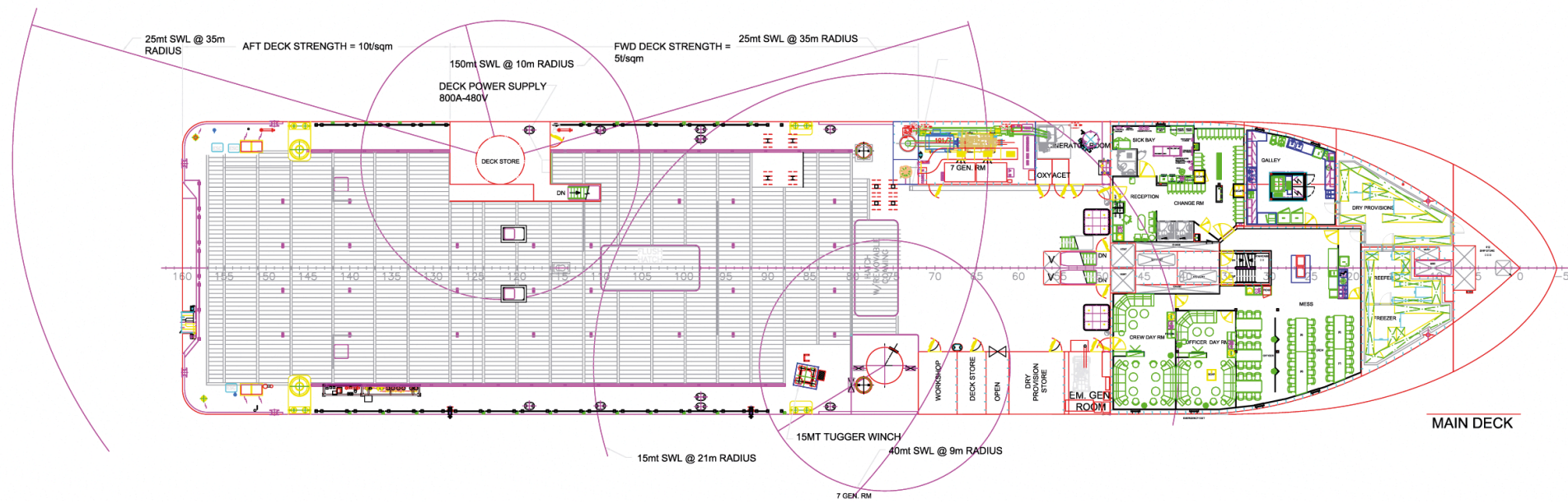
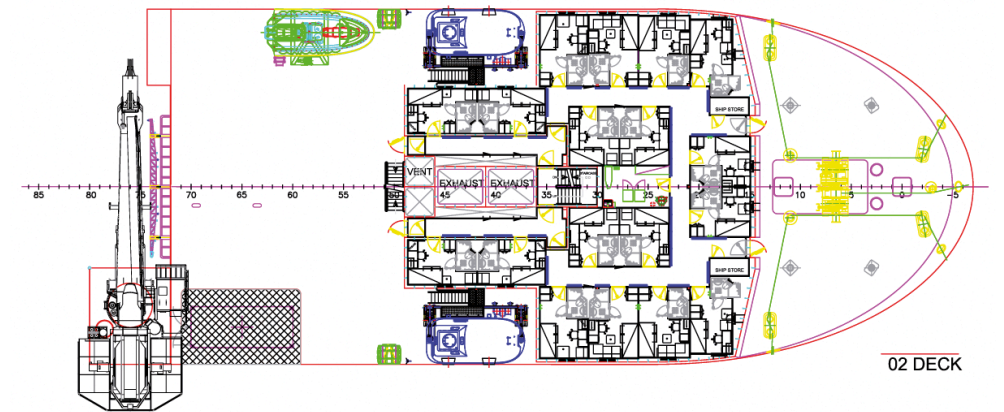
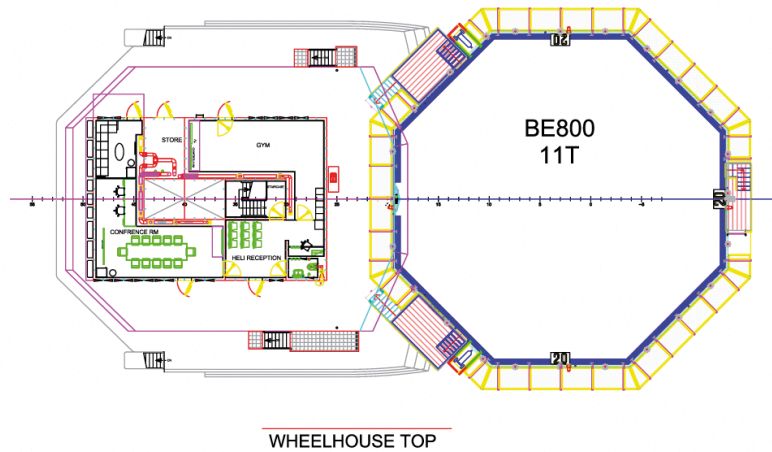
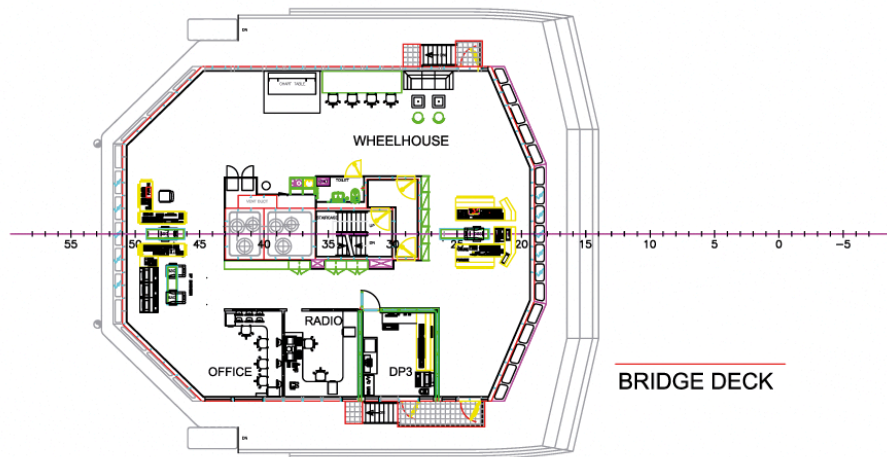
TRANSFER

Fuel:	150 m³/h at 7 bars
Fresh water:	150 m³/h at 7 bars
Active anti heeling ballast:	2 x 1,500 m³/h
Special products / Methanol:	2 x 100 m³/h at 9 bars

ACCOMODATIONS

Accommodations for:	105 pers
Single cabins:	33
2 men cabins:	36
Offices:	4
Conference room (10 pers):	1
Hospital:	1
Mess / Day rooms:	2
Laundry:	1
Galley:	1
Workshops:	2
Moonpool (not open-option):	8 m x 8 m
Below deck workshop: (no moonpool):	32.00 m x 12.00 m
Hatch:	7.00 m x 3.00 m (stern) and 6.80 m x 3.00 m (forward)

All particulars believed to be correct but not guaranteed





148, rue Sainte
13007 Marseille
France
T : +33 (0)4 91 13 08 00
F : +33 (0)4 91 13 07 90

Contact:
marketing@bourbon-subsea-services.com