



BOURBON ATLANTIDE

DP2, FiFi I Platform Support Vessel

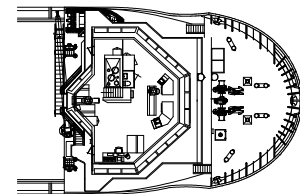
3,250 t deadweight



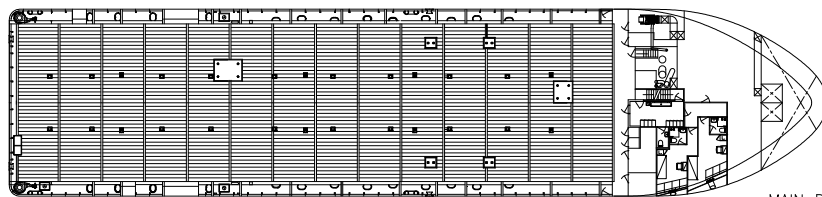
BOURBON ATLANTIDE is a UT 755L design, DP2, FiFi 1, platform supply vessel.

The vessel is designed for world-wide, deep water operations to fulfill the following duties:

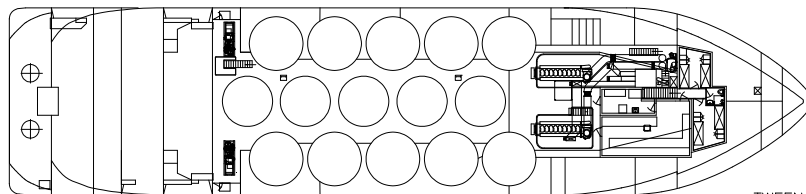
- Transportation of liquid products, deck cargo and other equipment for drilling and production support.
- Easily upgradable for ROV operations.



FORECASTLE DECK



MAIN DECK



TWEEN DECK

PLATFORM SUPPLY VESSEL

REGISTRATION

Vessel Name: **BOURBON ATLANTIDE**

Type: **DP2 PSV, ULSTEIN Design UT 755 L.**

Year: **2003**

Owner: **Bourbon Offshore**

Builder: **AKER BRATTVAAG (Norway)**

Class: **DNV + 1A1, Fire-Fighter 1, SF, EO, DPS 2, Clean.**

Flag: **St Vincent and Grenadines**

Updated: 29-06-2012



MAIN PARTICULARS

DIMENSIONS

Length overall:.....72.00 m
 Breadth moulded:.....16.00 m
 Depth:.....7.00 m
 Draft:.....5.90 m
 Deadweight:.....3,250 t
 Gross tonnage:.....2,152
 Net tonnage:.....645

CAPACITIES

Deck area:.....(51.00 x 13.50 m) 688 m2
 Deck cargo:.....1,600 t
 Fuel oil:.....1,023m3
 Drill water:.....1,316 m3
 Fresh water:.....800 m3
 Liquid mud:967 m3
 Brine:387 m3
 Base oil:.....208 m3
 Dry Bulk/Cement:.....318 m3

DELIVERY RATES

Fuel oil:.....200 m3/h at 9 bars
 Drill water:.....150 m3/h at 9 bars
 Fresh water:.....200 m3/h at 9 bars
 Liquid mud:.....2 x 100 m3/h at 18 bars
 Brine:75 m3/h at 18 bars
 Base oil:.....90 m3/h at 9 bars
 Dry Bulk/Cement:.....2 x 22.7 m3/h at 5.6 bars

ACCOMMODATIONS

Accommodations for:.....26 pers
 Single cabins:.....10
 2 man cabins:.....2
 4 man cabins:.....3
 Hospital:.....1
 Mess / Day room, laundry, provision room, stores galley.

MACHINERY / PERFORMANCE

PROPULSION - MACHINERY

Main engines:.....2 x 2,730 Hp
 Propellers:.....2 with CCP
 Bow thrusters:.....2 x 590 kW Tunnel
 Stern thruster:.....1 x 590 kW Tunnel
 Rudders:.....2 independent rudders with flap
 Shaft generators:.....2 x 1,800 kVA
 Auxilliary generators:.....2 x 250 kW
 Emergency generator:.....48 kW

SPEED

Maximum speed (100%):.....14.5 knots

EQUIPMENT & ELECTRONICS

DYNAMIC POSITIONING SYSTEM

Type:.....DP2
 Sensors and monitoring as per class 2 requirements:
 2 wind sensors, 3 VRU, 1 Cyscan MK4.

DECK EQUIPMENT

Tuggers:.....2 x 10 t
 Capstans:.....2 x 8 t
 Deck provisions crane:.....3 t @ 16 m
 Windlass:.....1

SAFETY EQUIPMENT

Fire Fighting 1:2 pumps (1,600 m3/h) and monitors
 Life saving arrangement
 MOB boat with davit

ELECTRONICS

- NAVIGATION

2 radars
 3 gyrocompasses
 1 magnetic compass
 1 digital echo-sounder
 1 speed log
 1 autopilot system
 1 GPS, 2 DGPS
 1 AIS, 1 BNWAS

- COMMUNICATION

1 radio system compliant with GMDSS A3
 1 Navtex
 2 Inmarsat C
 1 VSAT
 1 Fleet Broadband
 1 GSM
 1 weather fax

All particulars believed to be correct but not guaranteed

Bourbon Offshore - 148, rue Sainte - 13007 Marseille - France
 Internet: www.bourbon-online.com - E-mail: bourbon-offshore@bourbon-online.com