



BOURBON LIBERTY 100 Series

DP2 Diesel Electric Platform Support Vessel

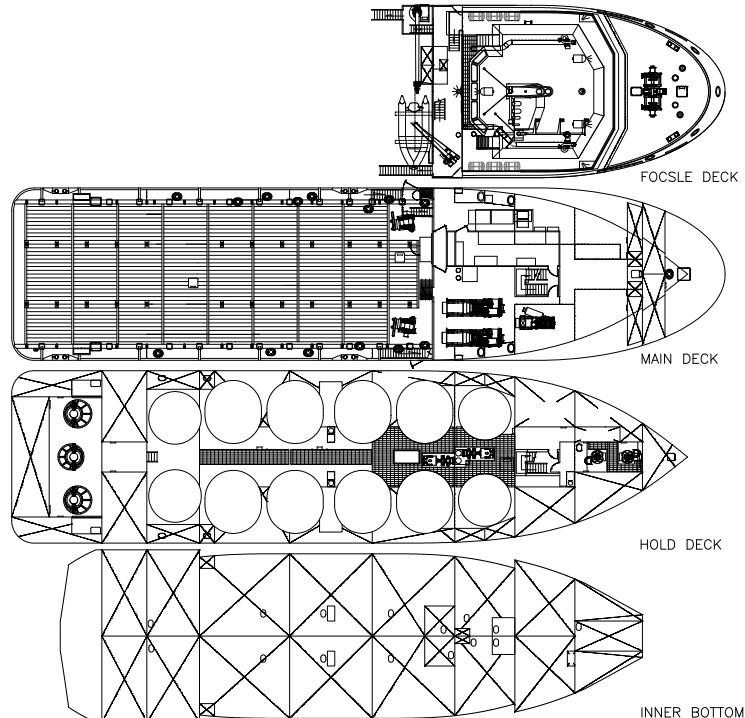
4,075 barrels liquid mud

Low emissions



The BOURBON LIBERTY 100 Series PSV is a state of the art platform supply vessel. Equipped with Diesel Electric propulsion, three main engine configuration, triple stern L-drives, two bow thrusters, and Dynamic Positioning Class II (DP II), the vessel is extremely maneuverable and capable of precise station keeping while in DP mode while also making operations extremely safe and reliable.

The main engines of the BOURBON LIBERTY 100 Series have been moved to the main deck level as opposed to below deck as is the case with a traditional PSV. This unique propulsion configuration allows 30% more below deck cargo capacity as compared to a traditional PSV. As a result, the BOURBON LIBERTY 100 Series is really dedicated to support drilling activities and can carry as much liquid products as larger vessels.



PLATFORM SUPPLY VESSEL

REGISTRATION

Vessel Name: **BOURBON LIBERTY 100**

Type: **PSV**

Year: **2008**

Owner: **Bourbon Offshore**

Builder: **Dayang Shipyard - China**

Class: **ABS + A1 Offshore support vessel, AMS, DPS-2, Fi-fi 1 (E),**

Flag: **Vanuatu**



TECHNICAL SPECIFICATIONS

PSV - BOURBON LIBERTY 100 Series



MAIN PARTICULARS

DIMENSIONS

Length overall:.....57.90 m
 Breadth moulded:.....14.00 m
 Depth:.....5.50 m
 Max Draft:.....4.90 m
 Deadweight:.....1,509 mt
 Gross tonnage:.....1,517

CAPACITIES

Deck area: (5 mt/m2).....(31,50x11,40 m) 360 m2
 Max Deck cargo:.....Approx 600 mt
 Fuel oil:.....537 m3
 Drill water:.....410 m3
 Fresh water:.....386 m3
 Liquid product tanks:(Mud/Brine/Base oil/Drill water)
(8 tanks) Total: (4075 barrels) 648 m3
 Dry Bulk/Cement:(4 tanks) Total: (5500/6000 cft) 156/170 m3
 Foam:.....21 m3

DELIVERY RATES

Fuel oil:.....150 m3/h at 60 m
 Fresh water:.....150 m3/h at 60 m
 Drill water/ballast:.....150 m3/h at 60 m
 Bulk material: :.....50 mt/h at 60 m
 Liquid mud:.....2 x 150 m3/h at 60 m
 Liquid mud tanks fitted with agitators and fixed washing system.

ACCOMMODATIONS

Accommodations for:.....22 pers.
 Single cabins:.....4
 2 man cabins:.....5
 4 man cabins:.....2
 Mess room:.....1
 Day rooms:.....2
 Fully air-conditioned.

MACHINERY / PERFORMANCE

PROPULSION - MACHINERY

Main generators:2 x 1,290 kW + 1x 485 kW.
 Main propulsion:2 x 843 kW azimuth + 1 x 843 kW fixed pitch.
 Bow thrusters:.....2x 560 kW
 Emergency generator:.....112 kW

SPEED / CONSUMPTION

Maximum speed (100%):.....12,2 t/24h at 12.5 knots
 Service Speed (80%):.....8.7 t/24 h at 11.5 knots
 Economical Speed (50%):.....6.8 t/24 h at 10.5 knots

EQUIPMENT & ELECTRONICS

DECK EQUIPMENT

Tuggers:.....2 x 10 mt pull
 Deck provisions crane:.....1 mt @10 m

SAFETY EQUIPMENT

Fire Fighting (Fifi 1) - 2 pumps x1,600 m3/h, 2 monitors x1,200 m3.
 Foam
 Water spray protection
 Alarm, monitoring and control system for periodically unattended machinery space.
 Life saving arrangement.
 1 MOB boat with davit.

DYNAMIC POSITIONING SYSTEM

Type:.....Class DP2
 2 operationg consoles,
 2 DGPS,
 1 laser reference unit,
 1 independent joystic system
 Sensors and monitoring as per class II requirements.

ELECTRONICS

- NAVIGATION

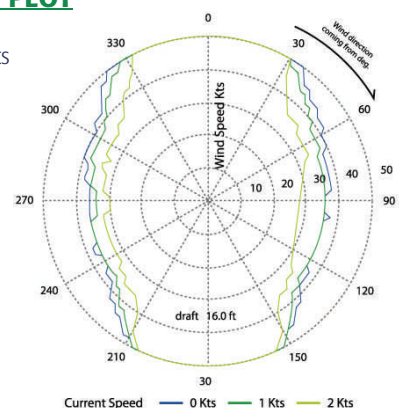
2 radars with ARPA, 2 radars transponders,
 2 gyrocompasses, 1 echo sounder,
 1 speed log, 1 autopilot

- COMMUNICATION

1 radio system compliant with GMDSSA3 rules.
 1 Inmarsat, Vsat

DP CAPABILITY PLOT

(All thrusters 100%)
 Max wind speed: 50 Kts



All particulars believed to be correct but not guaranteed

Bourbon Offshore - 148, rue Sainte - 13007 Marseille - France
 Internet: www.bourbon-online.com - E-mail: bourbon-offshore@bourbon-online.com