



# BOURBON THOR

DP 2 anchor handling tug supply vessel  
85 Metric ton bollard pull  
150 Metric ton line pull winch

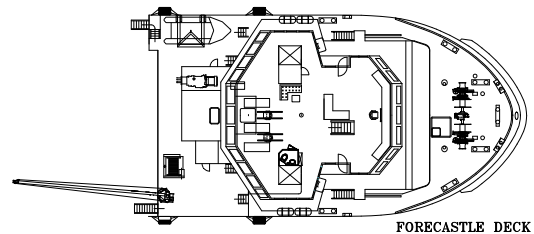


This anchor handling tug supply vessel has been designed by CONAN WU to carry out general services for the offshore industry.

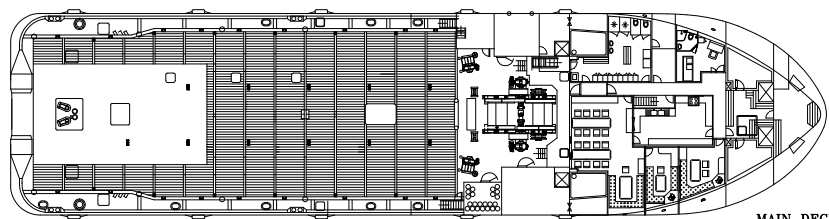
It is fitted with a class DP2 system, Fi-Fi I system, and easy to upgrade for stand-by/service duties.

It is equipped with a water-fall double drum winch with large capacity suitable for towing, anchor handling and offshore terminal operations.

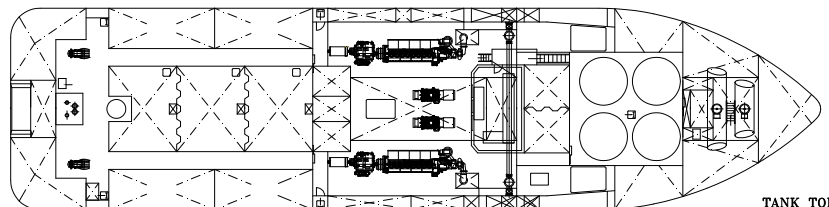
« Photo: BOURBON THERA Sistership of BOURBON THOR»



FORECASTLE DECK



MAIN DECK



TANK TOP

ANCHOR HANDLING TUG SUPPLY VESSEL

## REGISTRATION

Vessel Name: **BOURBON THOR.**  
Type: **Anchor Handling Tug Supply Vessel.**  
Year: **2006.**  
Builder: **Dayang shipyard-China.**  
Owner: **Bourbon Offshore.**

Class: **BV + A1, ⌘ Hull, ⌘ Mach, ⌘ Tug, Supply vessel, Unrestricted navigation, Fire Fighting Ship 1 Water spray, DYNAPOS AM/AT-R (Class II), ⌘ AUT-UMS**

Flag: **Panama**

Updated: 15-06-2012



### MAIN PARTICULARS

#### DIMENSIONS

Length overall:	64.80 m
Breadth moulded:	16.00 m
Depth:	5.80 m
Design draft:	4.30 m
Max draft:	4.90 m
Deadweight (at max draft):	1,603 t
Bollard pull:	85 t
Gross tonnage:	2,014

#### CAPACITIES

[@ 98% load capacity]

Deck area:	( 33,00 x 13,00 m ) 420 m <sup>2</sup>
Deck cargo:	800 mt
Fuel oil:	607 m <sup>3</sup>
Drill/water/ballast:	302 m <sup>3</sup>
Fresh water:	544 m <sup>3</sup>
Liquid mud/Brine :	397 m <sup>3</sup>
Dry bulk/cement:	174 m <sup>3</sup>
Foam:	18 m <sup>3</sup>
Rig chain / Mud:	111 m <sup>3</sup>

#### DELIVERY RATES

Fuel oil:	150 m <sup>3</sup> /h at 60 m
Fresh water:	150 m <sup>3</sup> /h at 70 m
Drill/ water/ballast:	150 m <sup>3</sup> /h at 70 m
Liquid mud:	2 x 150 m <sup>3</sup> /h at 70 m
Dry Bulk/Cement:	50 t/h at 60 m

Liquid mud tanks fitted with agitators and fixed washing system.

#### ACCOMMODATIONS

Accommodations for:	28 pers
Single cabins:	6
2 man cabins:	5
4 man cabins:	3

Mess / Day rooms, hospital, laundry, galley, stores, office.  
Fully air conditioned.

### MACHINERY / PERFORMANCE

#### PROPULSION - MACHINERY

Main engines:	2 x 2,640 kW
Propellers:	2 type CPP, dia=2,900 mm in nozzles
Rudders:	2 high lift flap type
Bow thrusters:	2 x 500 kW
Stern thruster:	1 x 500 kW
Auxiliary / Emergency generators:	2 x 440 kVA / 1 x 110 kVA

#### SPEED / CONSUMPTION

Maximum speed (100%):	25.8 t/day @14 knots
Service speed (80%):	21.5 t/day @12 knots
Economic speed (50%):	12.9 t/day @ 9 knots

### EQUIPMENT & ELECTRONICS

#### DECK EQUIPMENT

Towing /Anchor-handling electro-hydraulic high pressure winch:  
2 declutchable drums in waterfall arrangement each equipped with:

- Drum size:	9.00/2,090 mm dia. x 1,800 mm length
- Drum capacity:	1,500 m of 2 <sup>1/4</sup> " steel wire
- Rated pull:	150 t on 1 st. Layer at 0 - 8.40 m/min
- Brake holding load:	225 t on 1 st layer
- Cable lifters:	2 for 2 <sup>1/2</sup> " and 3" chains

Stern roller: 1,500 mm dia. x 4,000 mm length  
Storage reel: 800/2,200 mm dia. X 1,500 mm length  
- Capacity: 1,500 m of 2<sup>1/4</sup>" wire  
Windlass: 1  
Tugger winchs: 2 x 11 t pull  
Capstans: 2 x 10 t pull  
Deck cargo crane: 1.7 t @ 14 m

#### SAFETY EQUIPMENT

Fire Fighting (Fi-Fi I):	2 pumps of 1,500 m <sup>3</sup> /h 2 monitors of 1,200 m <sup>3</sup> /h
--------------------------	---

Water spray protection.  
MOB boat with davit  
Life saving arrangement  
Stand by rescue equipment

#### ELECTRONICS

##### NAVIGATION

2 radars
1 gyrocompass
1 magnetic compass
1 digital echo-sounder
1 speed log
1 autopilot system
1 GPS

##### COMMUNICATION

1 radio system compliant with GMDSS A3
1 VSAT, INMARSAT F, FFB 500
2 VHF EPIRB
Email / IP voice facilities

#### DYNAMIC POSITIONING SYSTEM (Class II)

ABS classed DP2 redundant positioning system comprising:

- 2 gyrocompasses, 1 digital echo-sounder, 2 speed Log
- 4 reference systems: 2 DGPS, 1 Fan beam, 1 Radar Scan
- 1 independent joystick system,
- Sensors and monitoring as per class II requirements.

#### DP CAPABILITY PLOT

(All thrusters 100%)
Max wind speed: 50 Kts

*All particulars believed to be correct but not guaranteed*