

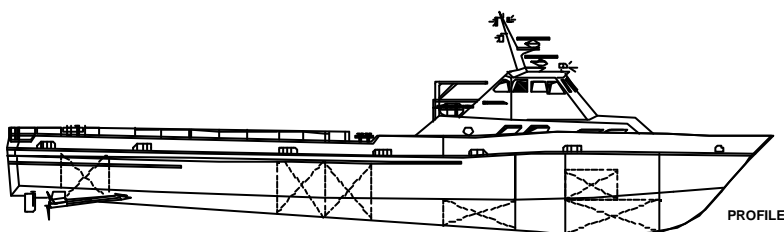


Crew boat/Fast supply vessel

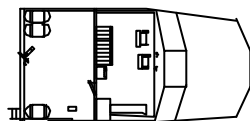
# MISS ALLIE & MISS RAMONA

60 Passengers

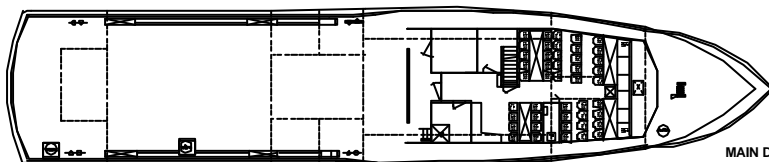
110 Metric tons deck cargo



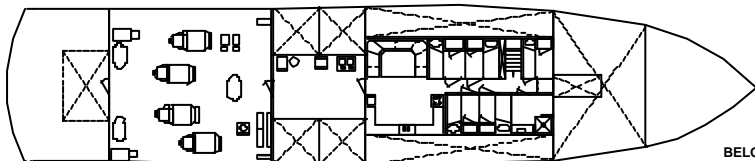
PROFILE



PILOT HOUSE



MAIN DECK



BELOW DECK

130' MISS ALLIE & MISS RAMONA were built by Breaux Bros. Enterprises, Inc. for fast transportation of personnel and cargo.

Able to carry 110 metric tons on deck at 15 knots, these vessels allows crew changes on distant deep water fields and urgent cargo shipments.

Under the main deck, these vessels are fitted with fuel and fresh water cargo capacities.

Their propulsion with four propellers and a bow thruster gives her an excellent manoeuvrability.

Photo: « MISS RAMONA » Sistership of « MISS ALLIE ».

22-11-2007



Crew boat/Fast supply vessel

# MISS ALLIE & MISS RAMONA

60 Passengers

110 Metric tons deck cargo

## CONSTRUCTION

**Hull and superstructure materials:** sea water resistant aluminium (Alloy 5086 & 6061).

**Year built:** 1989 by Breaux Bros. Enterprises, Inc.

**Flag:** Vanuatu.

**Owner:** SMIT OFFSHORE WORLDWIDE LTD.

**Type:** Crew boat.

IMO: 8964032.

## MAIN DIMENSIONS

Overall length: .....39.60 m.

Overall beam: .....7.90 m.

Depth main deck midship: .....3.50 m.

Draft fully load (baseline): .....1.90 m.

Deadweight: .....140 mt.

Gross/Net tonnage: .....216 / 64.

## APPROVALS

Classification: ABS + A1 AMS.

Approved for transportation of 60 passengers and 4 crew.

## ACCOMMODATION

- Insulated and air conditioned.
- Fitted with 60 individual seats for passengers in 1 lounge comprising:
  - luggage storage, video, washbasin.
- Accommodation for crew: 4 persons composed of:
  - Cabins.
  - 1 Restroom with washbasin.
  - Mess room, galley, 1 cold store room, laundry, lockers, .

## PROPULSION

- **Main engine:** 4 x 2,040 bhp (total 8,160 hp).
- **Propellers:** x 4.
- **Rudders:** x 2.
- **Ships service generators:** 2x 40 kW.
- **Bow thruster:** 1 tunnel.

## PERFORMANCE

Maxi speed: .....17 knots.

Cruising speed: .....15 knots.

## CAPACITIES & PUMPS

Fuel oil: .....25.30 m<sup>3</sup>, Pump- 3x 30 m<sup>3</sup>/h at 61 m.

Potable water: .....74.70 m<sup>3</sup>, Pump- 6x 30 m<sup>3</sup>/h at 61 m.

Deck cargo: .....110 mt

Cargo deck area: .....(20.40 x 6.85 m)

## EQUIPMENT

- 2 Radars.
- 1 Speed log.
- 1 GPS.
- 1 Autopilot.
- 1 Echo sounder.
- 2 VHF telephone.
- 1 magnetic compass.
- 2 steering gear.
- 1 radio telex.
- 1 radio telephone (single side band).
- 1 satellite telephone/data.

Outfit and safety equipment complying with international regulations for transportation of passengers.

## CONTROL & SAFETY

- Main levers control: propellers, thruster, rudders on fore and aft consoles in wheelhouse.

All particulars believed to be correct but not guaranteed

### **Bourbon Offshore**

148, rue Sainte - 13007 Marseille - France

Phone +33 (0)4 91 13 08 00 - Fax +33 (0)4 91 13 08 61

[www.bourbon-online.com](http://www.bourbon-online.com) - E-mail: [bourbon-offshore@bourbon-online.com](mailto:bourbon-offshore@bourbon-online.com)