



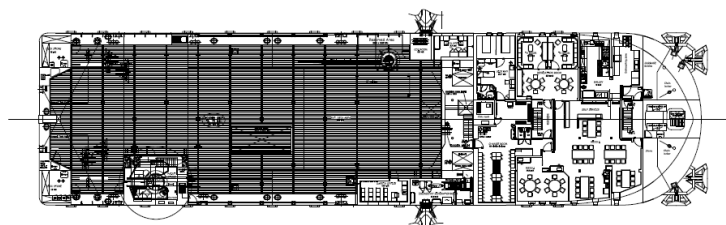
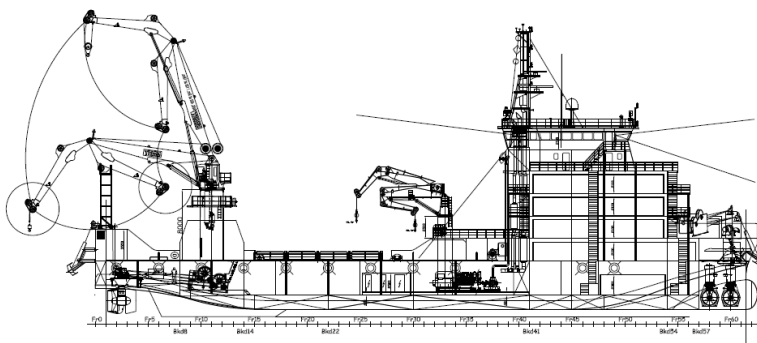
# BAHTERA AZALEA DP 2 - 8 POINTS MOORING



BAHTERA AZALEA is a multipurpose subsea services support vessel, diesel electric, DP 2, equipped with an 8 points mooring system, one AHC deep water crane and accommodation for 103 persons.

The vessel is designed for world-wide, deep water operations to fulfill the following duties:

- Windfarm support;
- Deepwater precision lifting and installation up to 1,500m;
- ROV operations;
- Maintenance of SPMs buoys;
- Survey operations;
- Platform maintenance support in DP;
- Transportation of liquid products, deck cargo and other equipment for drilling and production support;
- Flotel support.



M U L T I P U R P O S E S U P P L Y V E S S E L

## REGISTRATION

Vessel Name: **BATEHRA AZALEA** (Ex BOURBON SUPPORTER)

Flag: **Cyprus**

Class: **BV I ✕ HULL ✕ MACH**

**Special Service / Offshore Support; Fire fighting ship / Fire fighting 1 Waterspray**  
**Unrestricted navigation**

**✕ AUT-UMS; ✕ALM; ✕DYNAPOS-AM/AT-R; COMF - NOISE 3**

Builder: **SOCARENAM**

Year Built: **2010**

Updated: 08-01-2020



# TECHNICAL SPECIFICATIONS

## MPSV - BAHTERA AZALEA



### • MAIN PARTICULARS

#### DIMENSIONS

Length between PP:	73.70 m
Breadth moulded:	19.50 m
Depth:	5.50 m
Draft (Min / Max):	3.83 m / 5.50 m
Deadweight at max. draft:	1,823 t
Gross tonnage:	3,052 UMS
Moopool:	NA
Helideck (Diam/Tonnage):	NA

#### CAPACITIES & DELIVERY RATES

Deck area:	720 m <sup>2</sup> @ 10 t/m <sup>2</sup> (aft) & 5 t/m <sup>2</sup> (fwd)
Mezzanine deck area:	NA
Deck cargo (transit - operations):	1,176 t @ 1 m above deck
Fuel oil (capacity - transfer):	600 m <sup>3</sup> - 80 m <sup>3</sup> /h @ 9 bars
Drill or Water ballast (capacity - transfer):	1,270 m <sup>3</sup> - 150 m <sup>3</sup> /h @ 10 bars
Antiroll passive tanks:	NA
Antiheeling (capacity - transfer):	NA
Fresh water (capacity - transfer):	779 m <sup>3</sup> - 30 m <sup>3</sup> /h @ 9 bars
Mud / Brine (capacity - transfer):	200 m <sup>3</sup> / 400 m <sup>3</sup> - 2 x 80 m <sup>3</sup> /h @ 9 bars
Methanol (capacity - transfer):	NA
Dry bulk (capacity - transfer):	NA
Other:	NA
Oil recovery:	NA
Dispersant:	NA
Foam:	8.6 m <sup>3</sup>

#### ACCOMMODATIONS

Accommodations for:	103 persons
Single cabins:	9
2 men cabins:	35
3 men cabins:	NA
4 men cabins:	6
6 men cabins:	NA
Offices:	7
Hospital:	1
Mess / Day rooms:	2 Mess / 2 Day rooms
Laundry:	1
Galley:	1
Workshop:	1
Other:	1 Conference room, 1 Gym
Air conditioning:	YES
Water maker:	3 Osmoser - 21 m <sup>3</sup> /day

### • MACHINERY & PERFORMANCE

#### PROPULSION - MACHINERY

Main propulsion:	2 x 1,300 kW FP Azimuth thrusters
Bow thrusters:	2 x 700 kW CP Tunnel
Bow thruster retractable:	NA
Main generator:	5 x 910 kW - 460 V
Auxiliary generator:	NA
Emergency generator:	1 x 80 kW - 460 V

#### SPEED & CONSUMPTION (Information only)

Maximum speed (100%) ligh vessel:	11 knots - 14 t/day
Service speed (80%) medium loaded:	10 knots - 11 t/day
Stand-by at port:	2 t/day
Stand-by on DP:	4 t/day

### • EQUIPMENT & ELECTRONICS

#### DECK EQUIPMENT

Tuggers:	1 x 10 t
Capstans:	2 x 5 t
Deck service air supply:	1,200 m <sup>3</sup> /h @ 8 bars
Deck power supply:	2 x 300 kW - 460 V
Work boat:	1 MSI Marine
Deck provision crane:	10 t @ 10 m
Mooring:	4 x 40 t
Offshore crane 1:	SMST knuckle boom
Harbour capacity:	DAF 1.3 - 50 t @ 7.5 m - 15 t @ 21.5 m
Offshore capacity:	DAF 1.6 - 37.5 t @ 7.5 m - 12 t @ 21.5 m
Max water depth:	1,500 m
Miscellaneous:	Single or double fall - AHC - Man riding
Offshore crane 2:	NA
Harbour capacity:	NA
Offshore capacity:	NA
Main winch:	NA
Auxiliary winch:	NA

#### COMMUNICATION

Inmarsat:	2 x SatC
VSAT:	1 x Ku band 128 Kbit
Video network:	YES
Telephone in all cabins:	NO - only intercom
Video in all cabins:	NO

#### DYNAMIC POSITIONING

Maker:	SIREHNA EASY DP200
Type:	DP 2
Reference 1:	DGPS 1 Glonass
Reference 2:	DGPS 2 SAAB R4 + DGPS 3 Aquarius
Reference 3:	Cyscan Laser Reference system
Reference 4:	Sonardyne Fusion USBL
Reference 5:	Taut wire

#### SAFETY EQUIPMENT

Fi-Fi:	Class 1
Pumps:	2 x 1,800 m <sup>3</sup> /h
Monitors:	1 x 1,200 m <sup>3</sup> /h
Fast Rescue Craft:	NA
Rescue capacity:	NA

*All particulars believed to be correct but not guaranteed*

**Bourbon Offshore** - 148, rue Sainte - 13007 Marseille - France

Telephone: (+33) 04 91 13 08 00 - Internet: [www.bourbon-online.com](http://www.bourbon-online.com) - E-mail: [bourbon-offshore@bourbon-online.com](mailto:bourbon-offshore@bourbon-online.com)